

# **Evolution Mining**

AGM Presentation

27 November 2012

Jake Klein – Executive Chairman



**Evolution**  
MINING

# Disclaimer

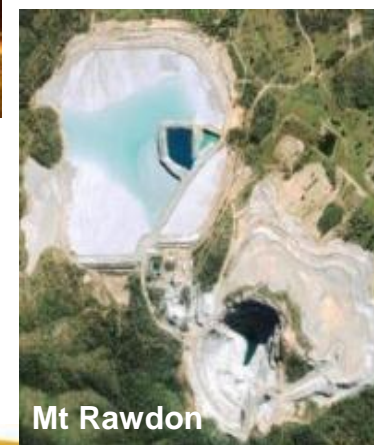
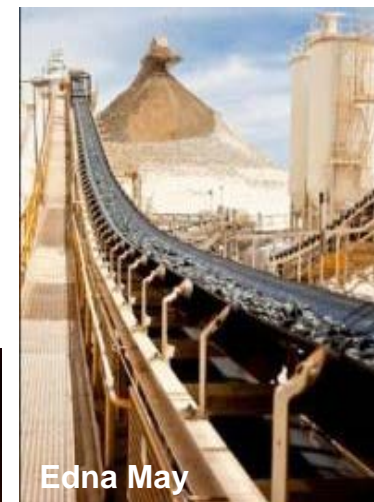
- This presentation has been prepared by Evolution Mining Limited (“Evolution Mining”) and consists of slides for a presentation concerning the company. By reviewing/attending this presentation, you acknowledge and agree the following.
- This presentation includes forward-looking statements. Forward-looking statements inherently involve subjective judgement and analysis and are subject to a number of risks, uncertainties, contingencies and other factors, many of which are outside the control of, and may be unknown to, Evolution Mining. As such, actual results or performance may vary materially from those expressed or implied by forward-looking statements. The types of factors that could cause such variation in actual results or performance include (without limitation) commodity prices, operational problems and general economic conditions. Given these factors, undue reliance should not be placed on forward-looking statements, which speak only as at the date of this presentation. Subject to any continuing obligations under applicable law or any relevant stock exchange listing rules, Evolution Mining does not undertake any obligation to publicly update or revise any forward-looking statements contained in this presentation, including (without limitation) where Evolution Mining’s expectations change in relation to such statements and where there is a change in events, conditions or circumstances providing the basis for any such statement.
- No representation or warranty, express or implied, is made as to the accuracy, completeness, reliability, fairness or correctness of the information contained in this presentation. To the maximum extent permitted by law, Evolution Mining and its related bodies corporate and affiliates, and each of their respective directors, officers, employees, agents and representatives, disclaim any liability or responsibility for loss or damage arising from or in connection with the use of the information contained in this presentation.

# Who we are

## 3<sup>rd</sup> Largest ASX Listed Gold Mining Company

### Corporate Information

ASX Code	EVN
Index	S&P ASX200
Shares	707.9M
Last Price <sup>1</sup>	A\$1.97ps
Market Capitalisation	A\$1.4B
Daily Turnover <sup>2</sup>	A\$3.6M
Cash <sup>3</sup>	A\$72.6M
Debt <sup>3</sup>	A\$31.5M
Forward Sales <sup>3</sup>	189,369oz at A\$1,573/oz
Major Shareholder	Newcrest 33%



1. As at 21 Nov 2012
2. 3 month average as at 19 Nov 2012
3. As at 30 Sept 2012

# Leadership Team



**Jake Klein**

•**Executive Chairman**  
BCom (Hons), ACA



**Tim Churcher**

•**VP Finance & Chief  
Financial Officer**  
BSc, MSc, MBA, MAusIMM,  
ACA



**Mark Le Messurier**

•**Chief Operating Officer**  
BEng, MBA, MAusIMM



**Aaron Colleran**

•**VP Investor Relations &  
Bus. Development**  
BEng(Geol), BCom (Fin)



**Roric Smith**

•**VP Discovery and Chief  
Geologist**  
BSc, BSc Hons, PhD Geology,  
MAIG



**Evan Elstein**

•**Company Secretary and  
GM IT**  
BCom (Acc & Fin), ACA



**Raelene Wyatt**

•**GM Human Resources**  
BCom (HR/IR)



**Adrian Pelliccia**

•**GM Discovery**  
BSc (Geol), Dip (Fin),  
MAusIMM

# Australia's newest mid-tier producer



Dec Q 2011 – 89,812oz at A\$698/oz

Mar Q 2012 – 84,122oz at A\$809/oz

Jun Q 2012 – 97,149oz at A\$762oz

FY2012 total production of 346,979oz – within guidance  
FY2012 average cash cost of A\$771/oz – below guidance

FY2013

Sep Q 2012 – 94,446oz at A\$732oz

## Notes:

Production represents total production i.e. assumes 100% asset ownership at all dates. Ownership interest in Cracow increased from 30% to 100% on 2 November 2011, 100% of Mt Rawdon acquired 2 November 2011, and 100% of Pajingo acquired 18 October 2011.

Cash costs are before royalties and after silver credits.

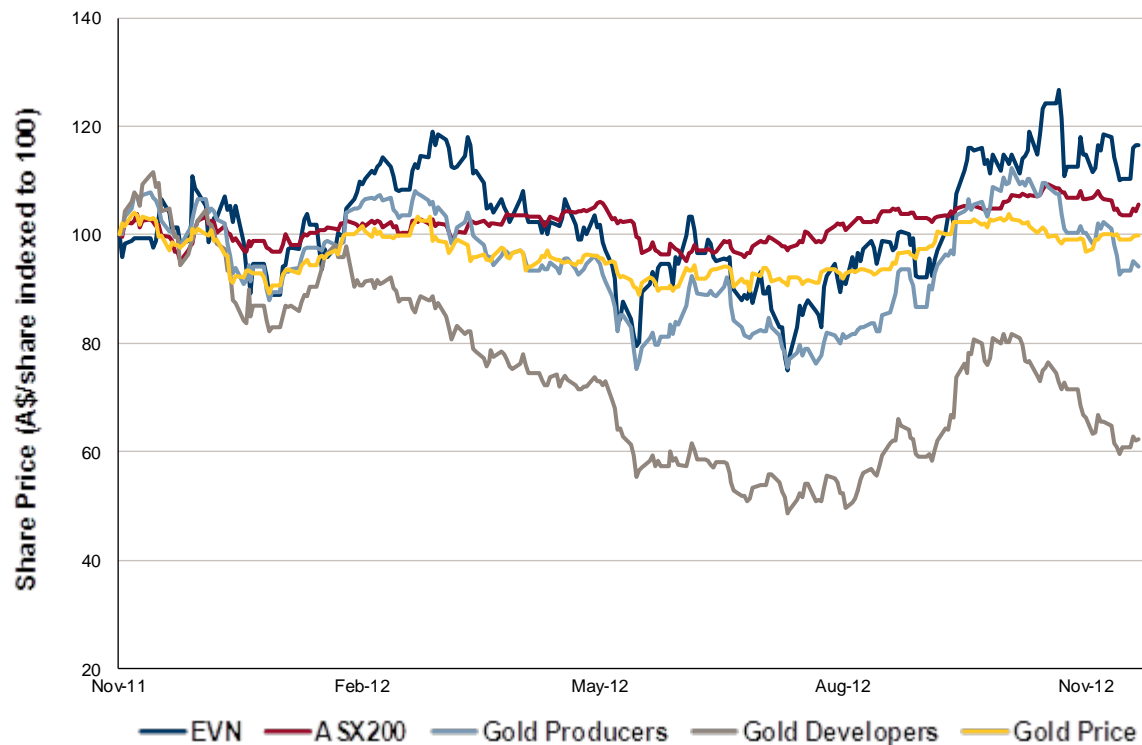


# FY2012 Financials – Key Takeaways

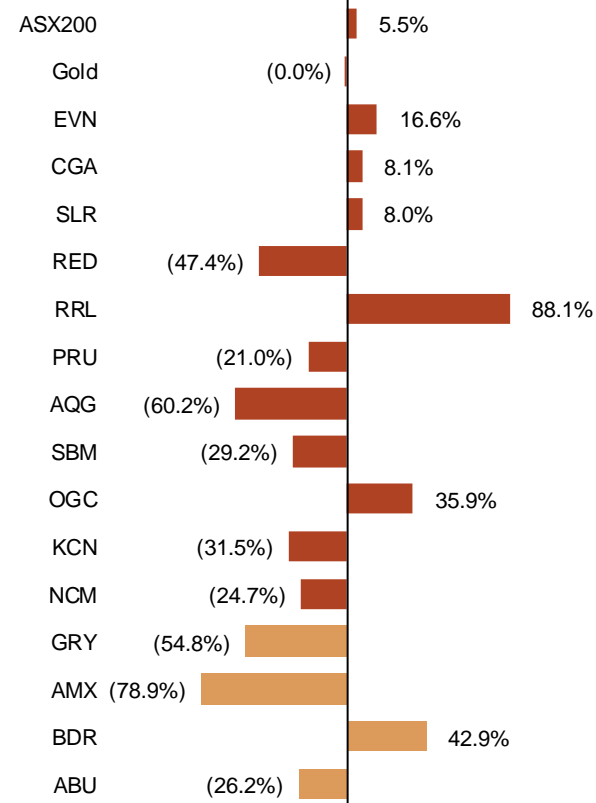
- Successful merger delivers growth in all key metrics
  - Revenue from gold and silver sales increased by 285% to A\$469.5 million
  - Group production of 346,979 ounces (280,401 ounces attributable<sup>1</sup>) in-line with guidance
  - Underlying EBITDA of A\$190 million
  - Underlying net profit of A\$63 million and reported net profit of A\$37 million
  - Investment in operations of A\$244 million including A\$85 million capital at Mt Carlton
  - Strong balance sheet with cash of A\$142 million (30 June 2012)

# ASX-listed gold companies

## Share price performance since EVN formation



## Relative performance



Source: FactSet, Bloomberg, IRESS.

Note: Market data as at 22 November 2012.

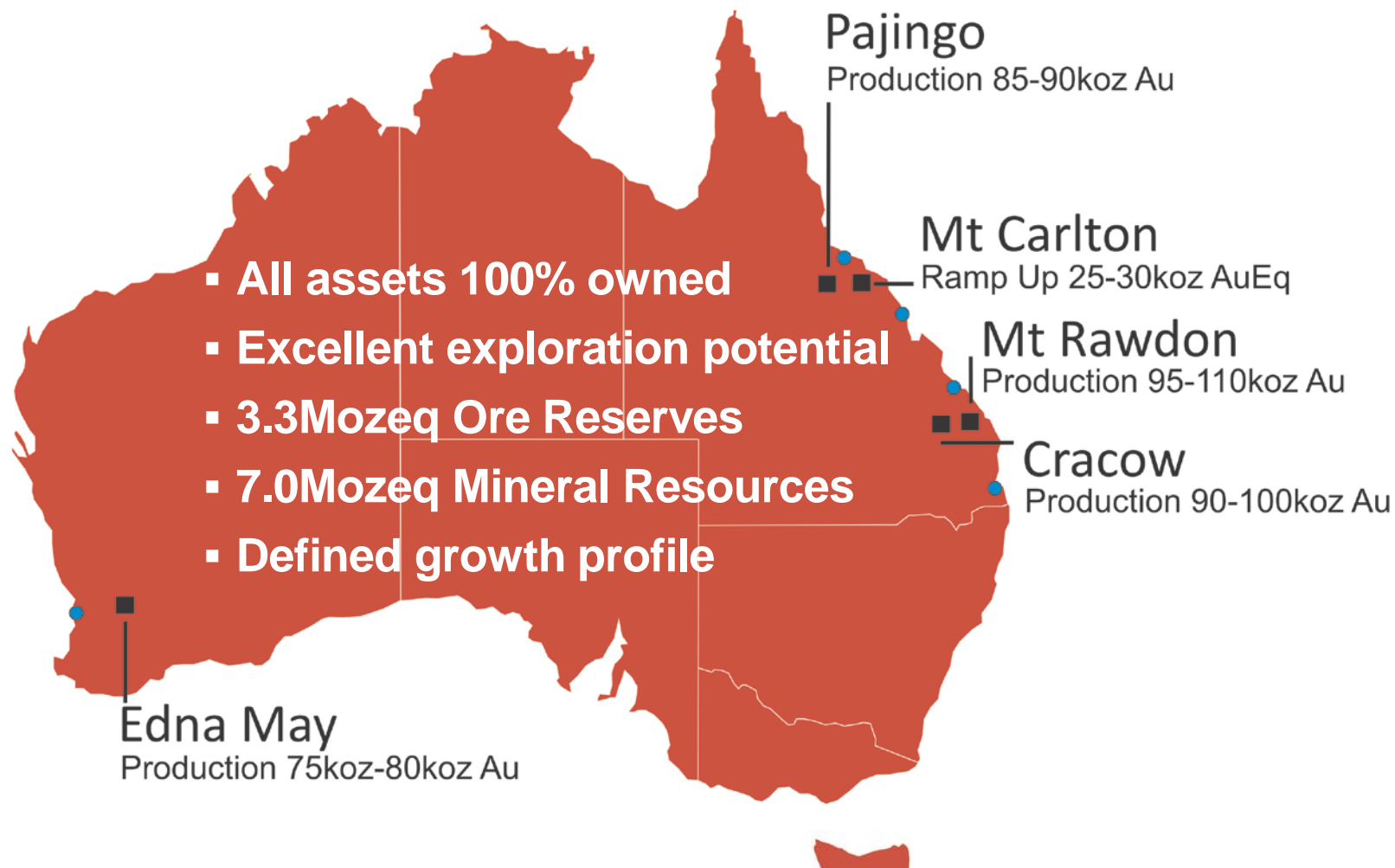
Share price data has been adjusted for historical dividends and share splits.

Gold producers index includes Evolution, Newcrest, St Barbara, CGA, Kingsgate, Alacer, OceanaGold, Regis, Red 5, Silver Lake and Perseus.

Gold developers index includes Beadell, ABM Resources, Ampella Mining and Gryphon Minerals.

■ Gold producers  
■ Gold developers

# Australia's newest mid-tier producer

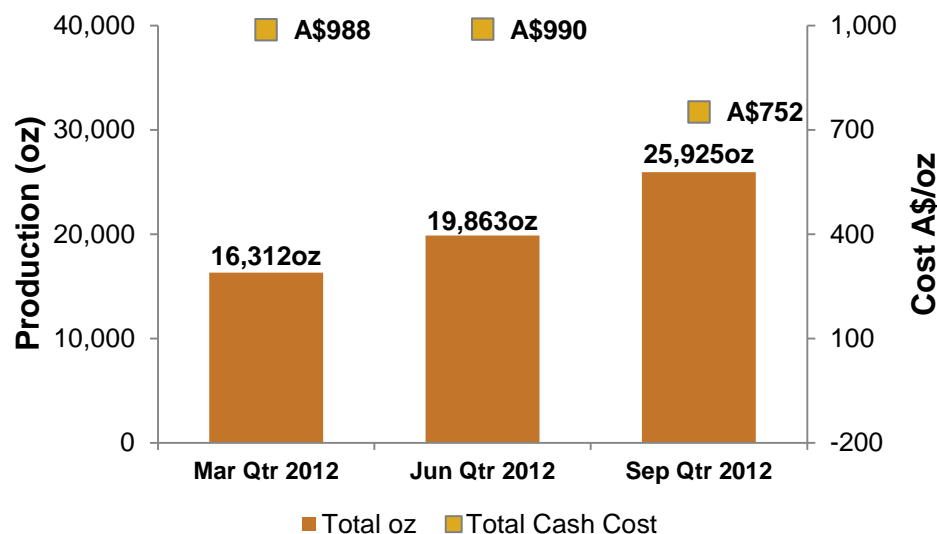
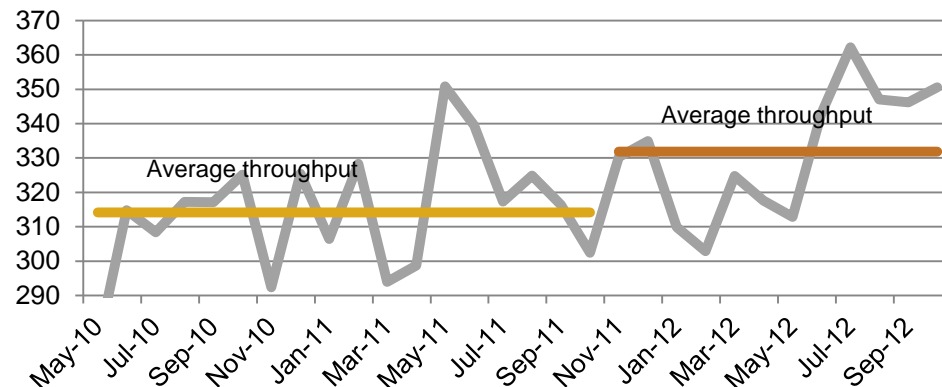


**Evolution FY2013 Production Outlook**  
**370koz – 410koz AuEq**

# Edna May

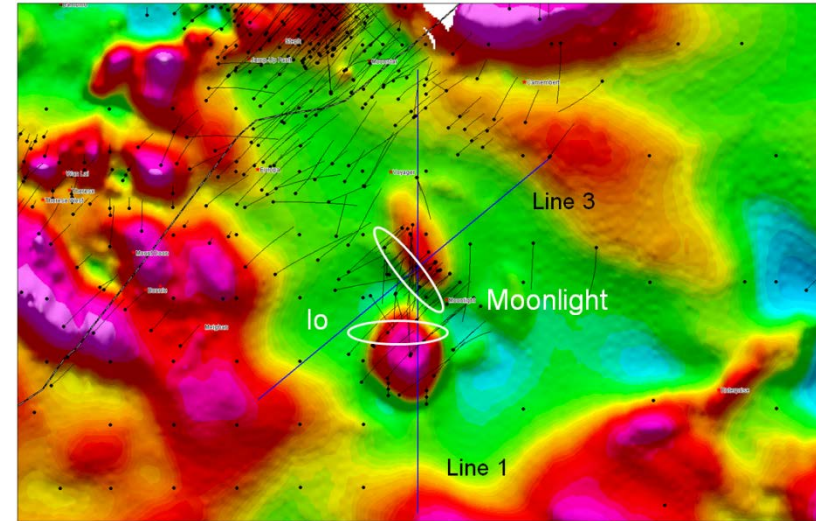
- Re-capitalised
- 11.7% production increase on FY2011
- Improved plant throughput & reliability
- Crushing trials to increase throughput to +3Mtpa via secondary crushing
- Improved process water security via bore field & pipeline construction
- Mine to mill optimisations: improved rock fragmentation, reduced secondary breakage requirements
- Near-mine exploration success: Greenfinch high-grade mineralisation extended 150m down-dip

**Edna May Plant Throughput (tph)**

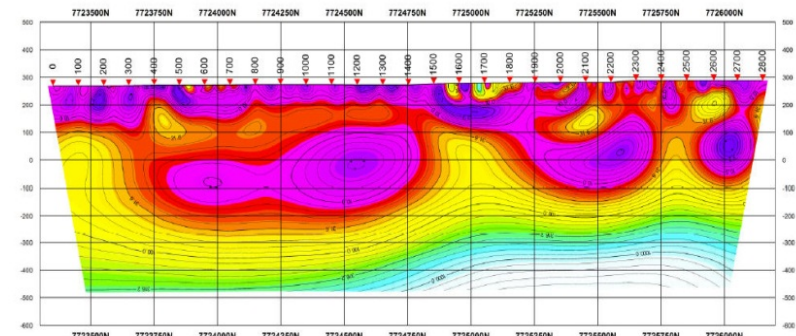


# Pajingo

- Re-capitalised, re-invigorated
- 65% production increase on FY2011
  - Best quarter's production since Newmont ownership in 2008
- Mining fleet upgrade
- Capital works for the ventilation system
- Sustainable mine growth
- Significant resource growth
  - 375koz identified within Vera-Nancy trend (Jandam and Faith)
  - Exploration success at Moonlight (2013 resource update)
  - Spartan Induced Polarisation technology finds depth extensions to Moonlight structure and potential extensions to Zed-Sonia mineralisation



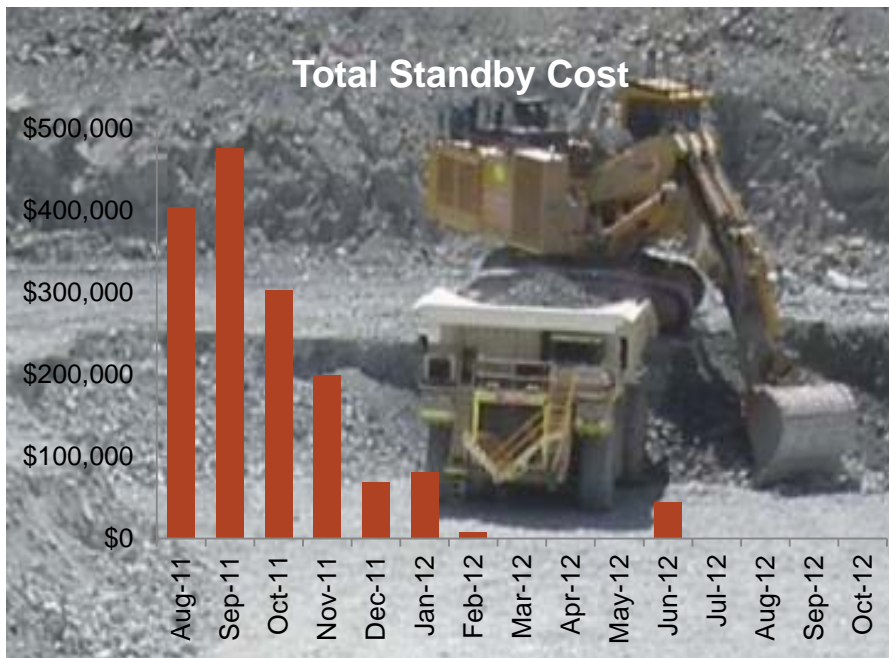
Spartan Deep IP at Moonlight Prospect



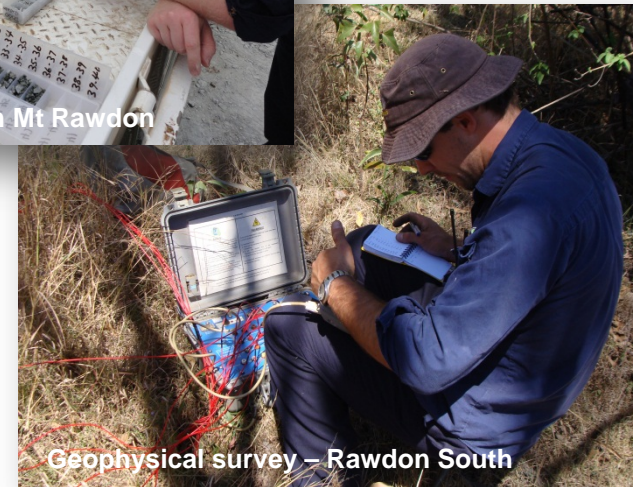
Resistivity Line 1

# Mt Rawdon

- Efficiency gains demonstrated - high standby costs now significantly reduced

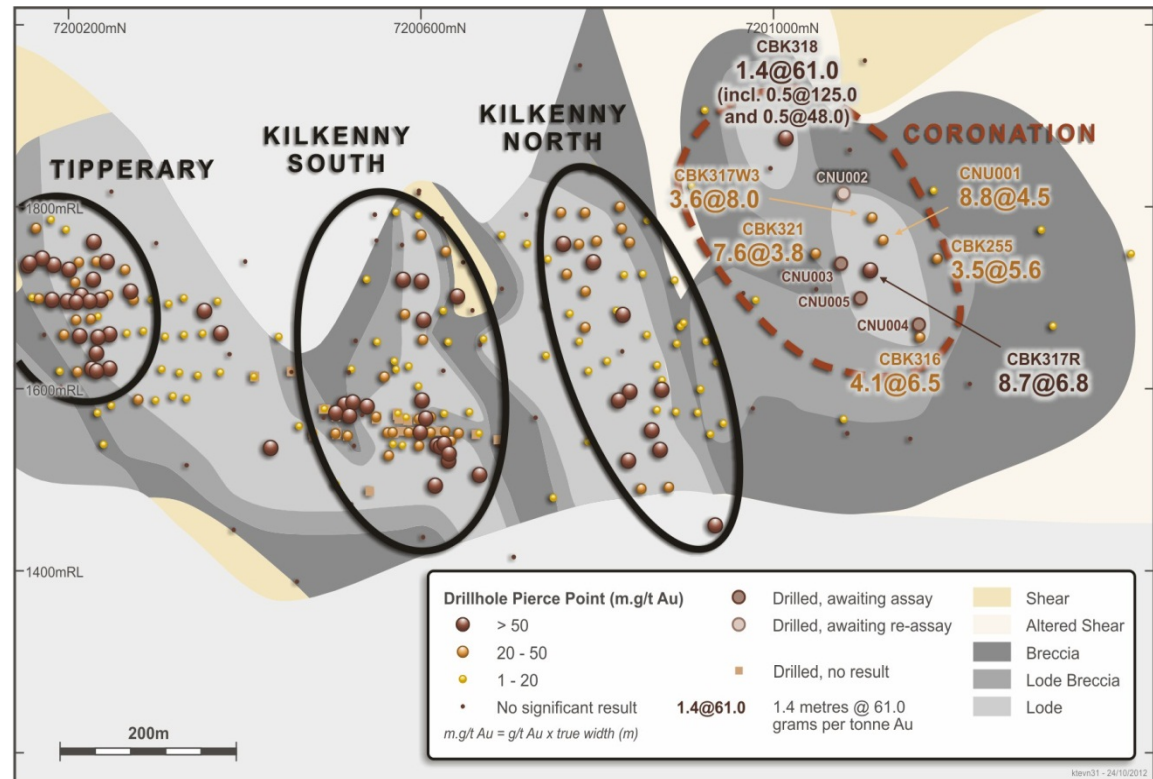


- Regional exploration targets identified and prioritised - high priority targets include Mt Shamrock, Mt Dell and Rawdon South
- Resource definition drilling



# Cracow

- Focus on UG development to provide greater production flexibility: recent development record of 1,847m primarily to further develop Kilkenny, Empire and Roses Pride
- Achieved a cost effective primary ventilation upgrade and improved mobile plant efficiencies across the mining fleet
- Discovery of new high grade epithermal gold shoot (Coronation): 250m from current mining operations and open along strike



# Mt Carlton

- High quality new project
- Key growth project: commissioning on schedule to commence December 2012
- Mt Carlton to be the lowest cost mine in the portfolio from FY2014
- Greenfields development – discovered in 2006
- Significant exploration upside

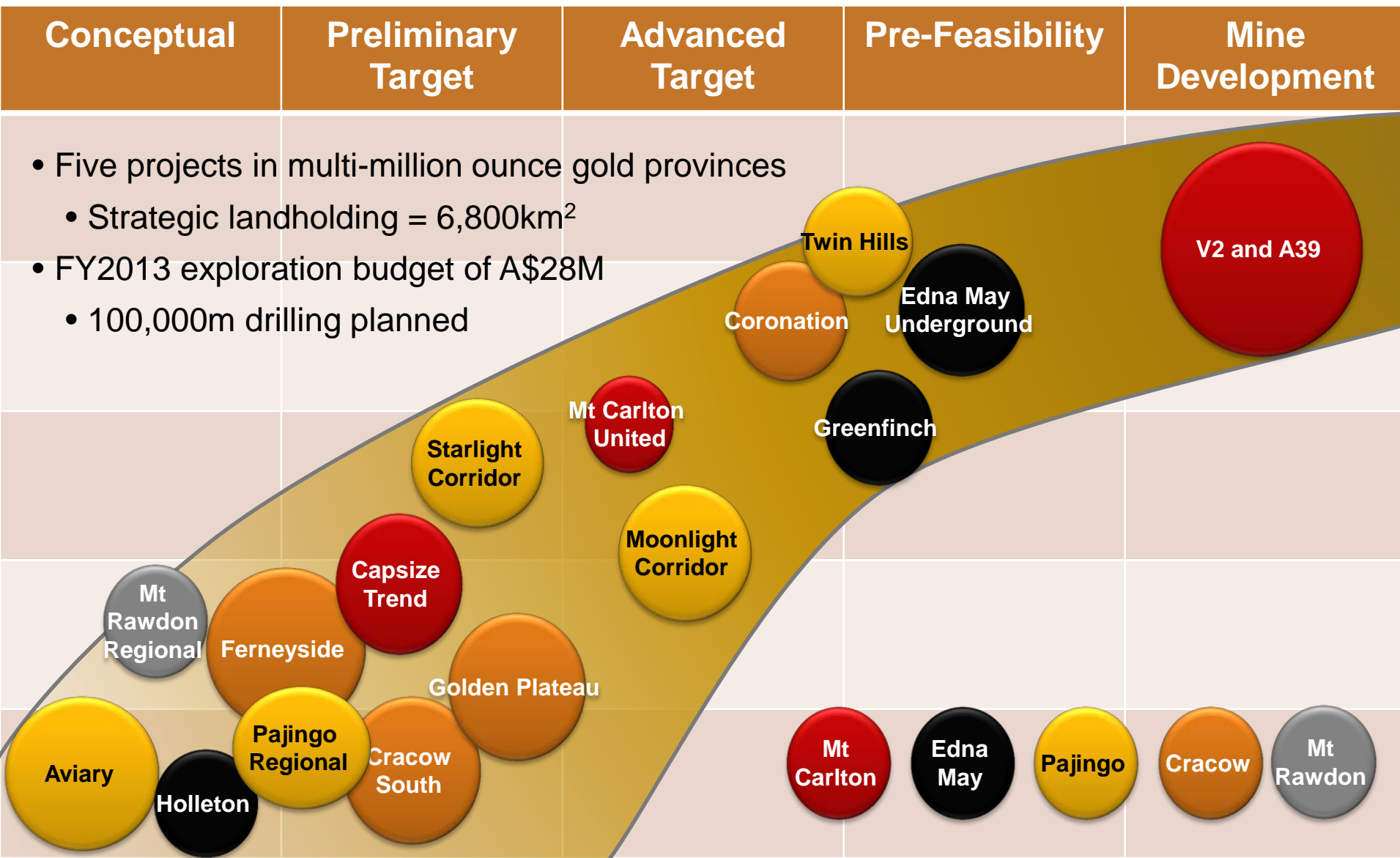
<b>Stage</b>	Construction
<b>Mine Type</b>	Open pit
<b>Minerals</b>	Gold, silver and copper
<b>Mineralisation type</b>	High-sulphidation epithermal
<b>Throughput</b>	800,000tpa
<b>Average grade</b>	V2 open pit – 3.7g/t gold eq.
<b>FY2013 ramp-up production outlook</b>	25,000 – 30,000ozeq payable
<b>Mine Life</b>	12 years
<b>Ore Reserves</b>	1.2Moz gold equivalent
<b>Mineral Resources</b>	2.2Moz gold equivalent



# Mt Carlton



# Exploration Pipeline





**Evolution**  
MINING

# Meaningful Growth

## Organic

- Aggressive exploration – funded through strong balance sheet and cash flow
- A\$28 million committed in FY2013

## Opportunistic

- Challenging debt and equity markets

## Newcrest relationship

- World-class understanding of Asia Pacific region
- Key competitive advantage

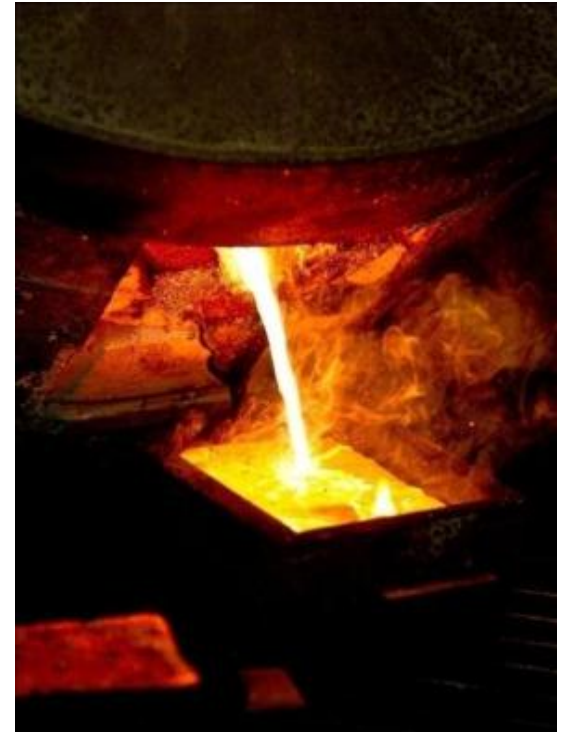
# We say, we do, we deliver

- Demonstrated operational predictability: portfolio of assets
  - Group gold production within guidance
  - Group cash costs significantly below guidance
- Replaced mining depletion by discovery
- Financial capacity for meaningful growth
- Attracted and retained talented senior management
  - Employing >1,000 people
- S&P/ASX200 – increased scale and liquidity



# Australia's newest mid-tier producer

- Portfolio of assets delivering operational predictability
- Strong balance sheet to fund growth
- Investing in efficiency gains across all operations
- Current growth projects being delivered
- Exploration focus on unlocking the potential across all sites



**Right place, right time – new Australian mid-tier gold producer**  
**We Say, We Do, We Deliver**

# **Evolution Mining**

**ASX Code: EVN**

[www.evolutionmining.com.au](http://www.evolutionmining.com.au)



**Evolution**  
MINING