



Water

Management Plan

Risk Statement: High

This document will be reviewed on a yearly basis unless a process change occurs earlier than this period.

Water MPL - Management Plan	NPO-ENV-MPL-0010	Owner: NPO Superintendent - Environment & Farms	Approver: NPO Manager - Sustainability
Version Control: 13	Department: ENV - Environmental	Date Published: 30/06/2025	Next Review: 30/06/2026
Document is UNCONTROLLED when printed			Page 1 of 47



Revision Summary

First Issue	Issue Date	Implementation Requirements	Approved By
1	10 July 2014	<p>This document has been prepared to outline water management practices at Northparkes Mines, to the satisfaction of its legal and other commitments. This document is a combination of multiple water documents that existed onsite and consequently, these have been archived. These documents include:</p> <ul style="list-style-type: none"> - Water Strategy 2007 - Water Supply 2005 - Water Management Plan 2011 (draft) - Operational Water Management Plan 2009 - Water Management Plan 2010 	

Version No.	Revision Date	Clause No.	Revision Details	Approved By
1.0	8 April 2013		This document replaces the ESH Water Management Plan A480459 and also Management Plan Sitewide Operational Water A258054. For revision history see archived or previous versions. Mal Hutchinson. HSE Systems Advisor	HSEF Manager & OPD Manager
2.0	September 2014		Re-write the whole document to satisfy the requirement of the new Project Approval 11-0060 by GHD	
3.0	October 2015		Update the whole document with changes requested by the Department of Planning by Bharath Ram	
4.0	February 2016		Updated with DPI changes. Updated section 10 and Section 11.2	
5.0	May 2016		Updated to include comments from EPA	
6.0	July 2016		Updated to included comments from EPA	
7.0	Sep 2016		Reviewed for consistency with PA 11_0060	
8.0	May 2017		Updated to include comments from EPA and changes to water management features	
9.0	May 2018		Reviewed for consistency with the Surface and Ground Water management plans	C Higgins
10.0	June 2020		Update following annual review	C Higgins
11.0	30 August 2021		Address recommendations from 2018 and 2021 Independent Environmental Audits	C Higgins
12.0	Feb 2023		Administrative update following approval and implementation of MOD6 and EPL variation. Approved by DPE 1 Nov 2023	C Higgins
12.01	Dec 2024		Annual review, update to Evolution	D Shaw
13.0	June 2025		Administrative changes following annual review (L Westcott)	Manager Sustainability

Consultation Required	Publicly available locations
Department of Planning, Housing and Infrastructure NSW EPA Department of Climate Change, Energy, the Environment and Water	Evolution Mining website

Associated Documents to be Reviewed
Groundwater NPO-ENV-MPL-0007 Surface Water NPO-ENV-MPL-0002



Table of Contents

1. Overview	5
1.1 Background	5
1.2 Mining Context	5
1.3 Water Management.....	5
2. Purpose and Objectives	9
3. Regulatory Requirements	9
3.1 Environmental Planning and Assessment Act 1979	9
3.2 Protection of the Environment Operations Act 1997	14
3.3 Water Act 1912	14
3.4 Water Management Act 2000	14
3.5 Dam Safety Act 2015	15
3.6 Guidelines and policies	15
4. Water management	16
4.1 Site water balance.....	16
4.2 Water Contingency Planning.	17
4.3 Surface water management.....	17
4.4 Groundwater management	17
4.5 Trigger Action Response Plans	18
4.6 Compensatory Water Supply	18
4.7 Incident Management and Reporting.....	18
4.8 Environmental protection licence	19
4.9 Water access licences	19
4.10 Complaints	19
4.11 Annual return.....	19
4.12 Annual review.....	19
4.13 Independent Environmental Audit.....	20
4.14 Access to information.....	20
5. Responsibilities	21
6. Review	21
7. Related documents	21
8. References	22
9. Glossary	23



Figures

Figure 1 WMP document hierarchy	5
Figure 2 Locality plan	7
Figure 3 Site features	8

Tables

Table 1 Water Management Plan requirements	9
Table 2 Water access licences and works approvals	15
Table 3 Annual average water balance	17
Table 4 Northparkes reporting requirements.	18
Table 5 Roles and Responsibilities	21
Table 6 Regulatory comments on 1 September 2015	25
Table 7 Regulatory comments on 26 November 2015	25
Table 8 Regulatory comments on 21 April 2016	26
Table 9 EPA Comments 24 November 2016	29

Appendices

Appendix A – Regulatory correspondence	25
Appendix B – Surface Water Management Plan NPO-CSR-MPL-0006	42
Appendix C – Groundwater Management Plan NPO-CSR-MPL-0007	42
Appendix D - Trigger Action Response Plans	43



1. OVERVIEW

1.1 Background

Northparkes Mining Services Pty Limited (Northparkes) is the manager of the Northparkes Joint Venture, an unincorporated joint venture between Evolution Mining (Northparkes) Pty Ltd (80%); Sumitomo Metal Mining Oceania Pty Ltd (13.3%) and SC Mineral Resources (6.7%). Northparkes is a copper-gold operation in Goonumbla, situated 27 kilometres north-west of the town of Parkes.

Construction of the ore processing plant and associated facilities began in 1993. Open cut mining commenced on the E22 and E27 ore bodies in late 1993. Development of the E26 Lift 1 block cave underground mine began in 1994, with full scale production commencing in 1997.

1.2 Mining Context

Operations at Northparkes primarily comprises underground mining from multiple ore sources that feed a processing plant with a capacity of 7.8 million tonnes per annum (Mtpa). The underground mine is accessed via a decline ramp from the surface for people and materials with ore transported to the surface via inclined conveyors and a hoisting shaft, with a nominal capacity of 7.6 Mtpa. Northparkes utilises low cost block and sub-level cave mining and exploits industry leading technology, such as semi-autonomous loaders and various cave monitoring systems.

The ore processing operation consists of four stages: crushing, grinding, flotation and thickening / filtering. In addition to producing concentrate, the ore processing team also manages tailings disposal. The concentrator was constructed in two modules. Each module consists of its own grinding circuit with a single flotation circuit, concentrate thickener and filter. After extracting the copper and gold bearing minerals, the tailings are combined in a single tailings thickener before being deposited in the active tailings storage facility.

Northparkes' copper concentrate is transported to a rail siding where it is then transported by rail to port, for shipping to overseas customers.

1.3 Water Management

The Water Management Plan (WMP) will be progressively developed as water management requirements change over time. A Surface Water Management Plan and Groundwater Management Plan have been prepared to support the WMP and are provided as appendices respectively. The WMP document hierarchy is presented as Figure 1.

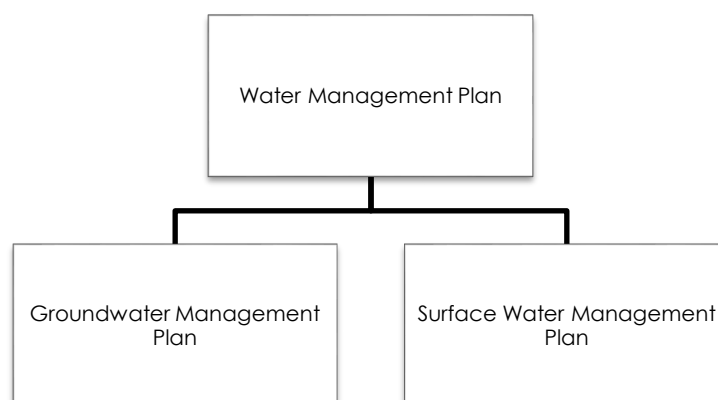


Figure 1 WMP document hierarchy



This WMP describes:

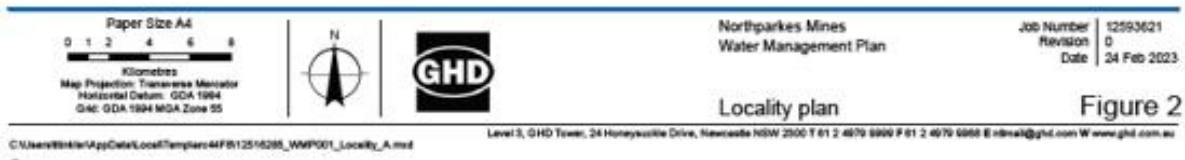
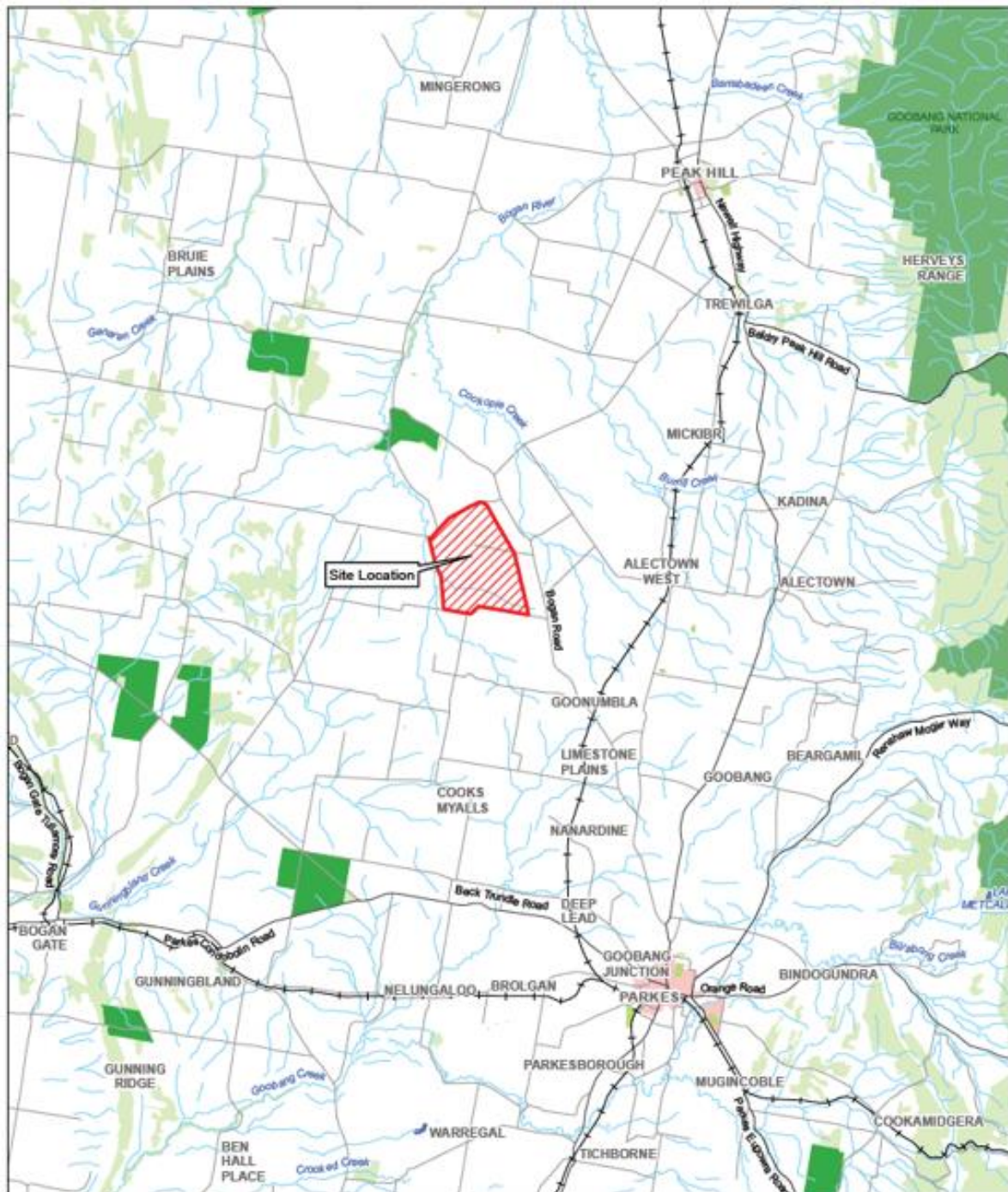
- The regulation requirements relating to water management.
- The site water balance.
- Reporting and review procedures
- Responsibilities for implementation

The WMP applies to all Northparkes personnel and contractors associated with operations at Northparkes.
The WMP applies to all operations as specified in DC 11_0060 and shown in Figure 3.

Water	NPO-ENV-MPL-0010	Version Control: 13	Date Published: 30/06/2025
Document is UNCONTROLLED when printed			Page 6 of 47



Figure 2 Locality plan



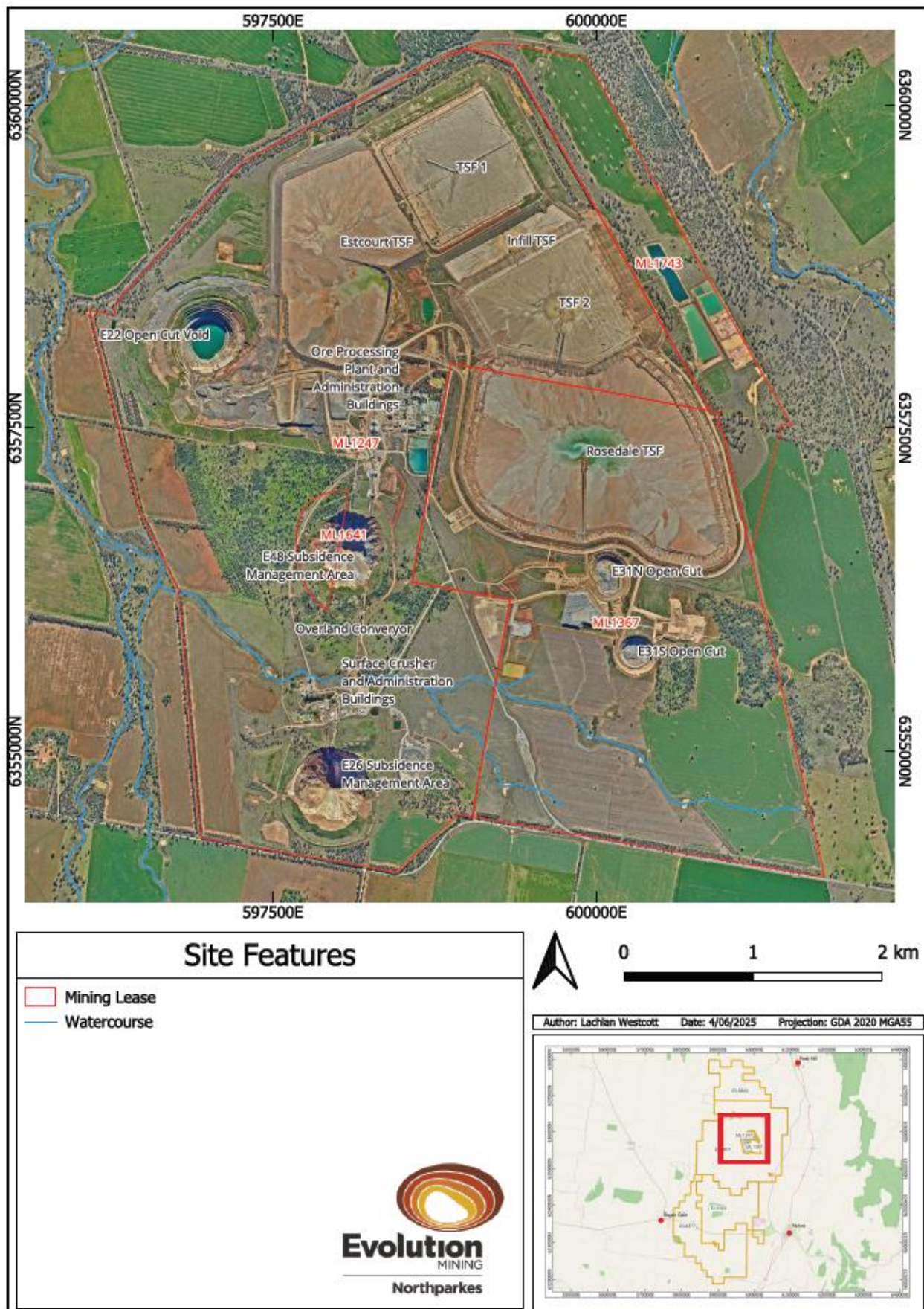


NPO - Northparkes Water

MPL - Management Plan



Figure 3 Site features





2. PURPOSE AND OBJECTIVES

This purpose of this WMP is to comply with Schedule 3, Condition 24 and Schedule 6, Condition 3 of DC 11_0060.

3. REGULATORY REQUIREMENTS

3.1 Environmental Planning and Assessment Act 1979

The Environmental Planning and Assessment (EP&A) Act, which is administered by the NSW Department of Planning, Housing and Infrastructure (DPHI), is the core legislation relating to planning and development activities in NSW and provides the statutory framework under which development proposals are assessed. The Northparkes Step Change Project was granted approval under Part 3A of the EP&A Act in July 2014.

This WMP has been developed in accordance with Schedule 3, and Schedule 6 of DC 11_0060, as well as the Statement of Commitments (SOC) from the Northparkes Step Change Project Environmental Assessment (EA). Table 1 indicates where each component of the Conditions are addressed within this document.

Table 1 Water Management Plan requirements

Condition	Requirement	Section
Schedule 3 Condition 19	The Applicant must ensure that it has sufficient water for all stages of the project, and if necessary, adjust the scale of operations on site to match its available water supply. <i>Note: Under the Water Act 1912 and/or the Water Management Act 2000, the Applicant is required to obtain the necessary water licences for the project.</i>	3.4 4.1 TARP (NPO-PRO-PRO-0009)
Schedule 3 Condition 20	The Applicant must provide a compensatory water supply to any landowner of privately owned land whose water supply is adversely and directly impacted (other than an impact that is negligible) as a result of the project, in consultation with DCCEE Water, and to the satisfaction of the Secretary. The extent of adverse impact on water supply must be investigated in accordance with the procedures outlined in Condition 4 of Schedule 5. The compensatory water supply measures must provide an alternative long-term supply of water that is equivalent to the loss attributable to the project. Equivalent water supply should be provided (at least on an interim basis) within 24 hours of the loss being identified, unless otherwise agreed with the landowner. If the Applicant and the landowner cannot agree on the measures to be implemented, or there is a dispute about the implementation of these measures, then either party may refer the matter to the Secretary for resolution. If the Applicant is unable to provide an alternative long-term supply of water, then the Applicant must provide alternative compensation to the satisfaction of the Secretary.	Table 3 4.6
Schedule 3 Condition 22	The Applicant must comply with the performance measures including: <ul style="list-style-type: none"> Minimise the use of clean water on site Design, install and maintain erosion and sediment controls generally in accordance with the series Managing Urban Stormwater: Soils and Construction Design, install and maintain the infrastructure within 40 m of watercourses generally in accordance with the Guidelines for Controlled Activities on Waterfront Land (DPI 2007) Design, installation and maintenance of creek crossings generally in accordance with the Policy and Guidelines for Fish Friendly Waterway Crossings (NSW Fisheries, 2003) and Why Do Fish Need To Cross The Road? Fish Passage Requirements for Waterway Crossings (NSW Fisheries 2003) Design, install and maintain the clean water system to capture and convey the 100 year ARI flood Maximise the diversion of clean water around disturbed areas on site Design, install and maintain the dams generally in accordance with the series Managing Urban Stormwater: Soils and Construction – Volume 1 and Volume 2E Mines and Quarries Designed to capture the 90th percentile 5-day duration rainfall event 	4.1 Surface Water Management Plan (Appendix B) Surface Water Management Plan (Appendix B) Surface Water Management Plan (Appendix B)



Condition	Requirement	Section
	<ul style="list-style-type: none"> Nil discharge from site On-site storages (including tailings dams, mine infrastructure dams, groundwater storage and treatment dams) are suitably lined to comply with a permeability standard of $< 1 \times 10^{-9}$ m/s in line with the NSW Environmental Guidelines for Solid Waste Landfills (EPA, 1996) Design, construct and maintain other aspects of the tailings dams in accordance with the standards set out in the Environmental Guidelines – Management of Tailings Storage Facilities (VIC DPI, 2006), including a requirement to maintain a minimum freeboard of 600 mm or a sufficient freeboard to accommodate a 1 in 100-year ARI, 72 hour rainfall event without overtopping at all times, whichever is greater Design and construct the tailings storage facilities in accordance with the requirement of the Dam Safety Committee 	Surface Water Management Plan (Appendix B)
	<ul style="list-style-type: none"> Chemical and hydrocarbon products to be stored in bunded areas in accordance with the relevant Australian Standards 	Surface Water Management Plan (Appendix B)
Schedule 3 Condition 23	The Applicant must prepare and implement a Water Management Plan for the project to the satisfaction of the Secretary. This plan must:	Whole document
	a) be prepared in consultation with DCCEEW - Water and the EPA, by suitably qualified and experienced persons whose appointment has been approved by the Secretary;	Appendices Appendix A – Regulatory correspondence
	b) be submitted to the Secretary for approval by 30 June 2014;	Completed (refer to Revision Summary)
	c) in addition to the standard requirements for management plans (condition 3 of Schedule 6), this plan must also include a: (i) Site Water Balance that: <ul style="list-style-type: none"> Includes details of: <ul style="list-style-type: none"> Sources and security of water supply, including contingency planning for future reporting periods; Water use and management on site; Reporting procedures, including the preparation of a site water balance for each calendar year; Describes the measures that would be implemented to minimise clean water use on site; 	4.1
	(ii) Surface Water Management Plan, that includes: <ul style="list-style-type: none"> Detailed baseline data on water flows and quality in the waterbodies that could be affected by the project; A detailed description of the water management system on site, including erosion and sediment control; Detailed plans, including design objectives and performance criteria, for the: <ul style="list-style-type: none"> Tailings storage facilities Final voids (see the Rehabilitation Objectives in Table 8); Detailed performance criteria for the following, including trigger levels for investigating any potential adverse impacts associated with the project; <ul style="list-style-type: none"> The water management systems (clean, dirty and contaminated); Downstream surface water quality; Downstream flooding impacts; and Stream and riparian vegetation health for Bogan River, Tenandra Creek, Goonumbla Creek and Cookopie Creek; A program to monitor and report on: <ul style="list-style-type: none"> The effectiveness of the water management systems (clean, dirty and contaminated); Surface water flows and quality, stream and riparian vegetation health in the watercourses that could be affected by the project; and 	Surface Water Management Plan (Appendix B),



Condition	Requirement	Section
	<ul style="list-style-type: none"> - Downstream flooding impacts; • Reporting procedures for the results of the monitoring program; and • A plan to respond to any exceedances of the performance criteria, and mitigate any adverse surface water impacts of the project; 	
	<p>(iii) Groundwater Management Plan, that includes:</p> <ul style="list-style-type: none"> • Detailed baseline data on groundwater levels, yield and quality in the region and privately-owned groundwater bores that could be affected by the project; • Groundwater assessment criteria, including trigger levels for investigating any potentially adverse groundwater impacts; • A program to monitor and report on: <ul style="list-style-type: none"> - Groundwater inflows to the block cave, sub-level cave and open cut mining operations; - The seepage/leachate from water storages, emplacement and final voids; - Background changes in groundwater yield/quality against mine-induced changes; - Impacts of the project on: <ul style="list-style-type: none"> ▪ Regional and local (including alluvial) aquifers; ▪ Groundwater supply of potentially affected landowners; and ▪ Riparian vegetation; - A program to validate the groundwater model for the project, and comparison of monitoring results with modelled predictions; and - A plan to respond to any exceedances of the groundwater assessment criteria. 	<p>Appendix C Groundwater Management Plan (Appendix C)</p>
<p>Schedule 6 Condition 3</p>	<p>The proponent must ensure that the management plans required under this approval are prepared in accordance with the relevant guidelines, and include</p> <p>a) detailed baseline data;</p> <p>b) a description of</p> <ul style="list-style-type: none"> • the relevant statutory requirements (include any relevant approval, licence or lease conditions); • any relevant limits or performance measures/criteria; • the specific performance indicators that are proposed to be used to judge the performance of, or guide the implementation of, the project or any management measures; <p>c) a description of the measures that would be implemented to comply with the relevant statutory requirements, limits, or performance measures/criteria;</p> <p>d) a program to monitor and report on the:</p> <ul style="list-style-type: none"> • Impacts and environmental performance of the project; • Effectiveness of any management measures (see c above); 	<p>Surface Water Management Plan (Appendix B), Groundwater Management Plan (Appendix C)</p> <p>3</p> <p>Surface Water Management Plan (Appendix B), Groundwater Management Plan (Appendix C)</p> <p>Surface Water Management Plan (Appendix B), Groundwater Management Plan (Appendix C)</p> <p>Surface Water Management Plan (Appendix B), Groundwater Management Plan (Appendix C)</p> <p>Surface Water Management Plan (Appendix B), Groundwater Management Plan (Appendix C)</p>



Condition	Requirement	Section
	<ul style="list-style-type: none"> e) a contingency plan to manage any unprecedented impacts and their consequences; f) a program to investigate and implement ways to improve environmental performance of the project overtime; g) a protocol for managing and reporting any; <ul style="list-style-type: none"> • incidents; • complaints; • non compliances with statutory requirements; and • exceedances of the impact assessment criteria and/or performance criteria; and • A protocol for periodic review of the plan. 	Appendix C) 4.5, 4.10 4.5, 6 4.7 4.10 6 4.5 6
Schedule 6 Condition 7	The Applicant must notify the Department and any other relevant agencies via the Major Projects Portal Immediately after It becomes aware of the Incident. This notice must describe the location and nature of the Incident.	5.1
Schedule 6 Condition 7a	Within 7 days of becoming aware of a non-compliance with the conditions of this consent, the Applicant must notify the Department of the non-compliance via the Major Projects Portal. This notice must set out the non-compliance, the reasons for the non-compliance (if known) and what actions have been taken, or will be taken, to address the non-compliance	5.1
Schedule 6 Condition 8	The Proponent must provide regular reporting on the environmental performance of the project on its website, in accordance with the reporting arrangements in any plans or programs approved under the conditions of this approval.	5.2
Schedule 6 Condition 9	<p>By the 31 March 2015, and every 3 years thereafter, unless the Secretary directs otherwise, the Proponent must commission and pay the full cost of an Independent Environmental Audit of the project. This audit must:</p> <ul style="list-style-type: none"> a) be conducted by a suitably qualified, experienced and independent team of experts whose appointment has been endorsed by the Secretary; b) include consultation with the relevant agencies; c) assess the environmental performance of the project and assess whether it is complying with the requirements in this approval, and any other relevant approvals, relevant EPL/s and/or Mining Lease (including any assessment, plan or program required under these approvals); d) review the adequacy of any approved strategy, plan or program required under the abovementioned approvals; and e) recommend measures or actions to improve the environmental performance of the project, and/or any strategy, plan or program required under these approvals. <p><i>Note: This audit team must be led by a suitably qualified auditor, and include experts any fields specified by the Secretary.</i></p>	5.7
Schedule 6 Condition 10	Within 3 months of commissioning this audit, or as otherwise agreed by the Secretary, the Proponent must submit a copy of the audit report to the Secretary, together with its response to any recommendations contained in the audit report.	Table 4
Schedule 6 Condition 11	<p>The Proponent must:</p> <ul style="list-style-type: none"> (a) make the following information publicly available on its website: <ul style="list-style-type: none"> h) the EA; i) current statutory approvals for the project; j) approved strategies, plans or programs required under the conditions of this approval; k) a comprehensive summary of the monitoring results of the project, which have been reported in accordance with the various plans and programs approved under the conditions of this approval; l) a complaints register, which is to be updated on a monthly basis; m) minutes of CCC meetings; n) the last five annual reviews; o) any independent environmental audit, and the Proponent's response to the recommendations in any audit; and p) any other matter required by the Secretary; and (b) keep this information up to date, 	5.2



Condition	Requirement	Section
	(c)to the satisfaction of the Secretary	
Statement of Commitments for Step Change Project Surface Water		
6.10.1	Northparkes will continue to manage its operations in accordance with its existing Water Management Plan, which will be updated to reflect the proposed amendments to the surface water catchments and additional monitoring and management measures. This will involve updates to the existing Northparkes Water Management Plan and environmental monitoring program.	This document
6.10.2	Additional catch drains will be developed around operational mining areas to intercept sediment-laden runoff and direct this material to new sediment dams. Consistent with the existing water management system, these works will seek to maintain separation between the three classifications of water on site (clean, dirty and contaminated water). To manage potential flood risk, Northparkes proposes to include a 1 m high bank at the toe of the proposed waste rock stockpiles which will incorporate the proposed catch drain.	Completed Surface Water Management Plan (Appendix B)
6.10.3	Northparkes will continue to manage contaminated water on site as a closed circuit process designed to manage runoff up to and including a 1 in 100 year average recurrence interval, 72 hour design storm event.	Ongoing Surface Water Management Plan (Appendix B)
6.10.4	All erosion and sediment control measures will continue to be carried out in accordance with the relevant guidelines for erosion and sediment control, including <i>Managing Urban Stormwater: Soils and Construction</i> (the Blue Book) Volume 1 (Landcom, 2004) and Volume 2E Mines and Quarries (DECC, 2008).	Ongoing Surface Water Management Plan (Appendix B)
6.10.5	The predicted annual water demands for Northparkes will remain consistent with the currently approved water demands with external sources of water accessed in accordance with existing approved and licensed extraction limits.	Ongoing Site Water Balance
Statement of Commitments for Step Change Project Groundwater		
6.9.1	Northparkes commit to the continuation of the existing approved groundwater monitoring program as part of the project.	Ongoing Groundwater Management Plan (Appendix C)
6.9.2	<p>In additions to the continuation of the existing groundwater monitoring program, Northparkes commit to the following additional groundwater monitoring and management measures:</p> <ul style="list-style-type: none"> The extent of dewatering impacts on current users and future resources will be monitored throughout the life of the project in accordance with a revised groundwater monitoring program. Monitor dewatering volumes to verify that volumes are within licensed allocations. Trigger levels, regarding declines in groundwater levels and the degradation of groundwater quality, will be reviewed to manage the potential impacts as part of the updated monitoring program. Where monitoring results indicate levels in excess of the trigger values, an investigation appropriate for the situation will be conducted to assess the need to implement management/mitigation/remedial measures. <p>The existing water monitoring program will be updated for the project in accordance with relevant approval requirements.</p>	Ongoing Groundwater Management Plan (Appendix C)

3.2 Protection of the Environment Operations Act 1997

The *Protection of the Environment Operations Act 1997* (POEO Act) is administered by the Environment Protection Authority (EPA). The objectives of the POEO Act are to protect, restore and enhance the quality of the environment.

Northparkes holds Environment Protection Licence (EPL) 4784 for the scheduled activity of 'mining for minerals' and 'crushing, grinding or separating > 2,000,000t' at the Northparkes Mines premises. EPL 4784 identifies two surface water [internal] discharge locations and six groundwater monitoring locations. For the groundwater monitoring locations, EPL 4784 also details groundwater monitoring requirements, including parameters, frequency, sampling method and testing method, as detailed in Appendix C. There are no surface water monitoring requirements set by EPL 4784.



3.3 Water Act 1912

The *Water Act 1912* is administered by DPE Water and has historically been the main legislation for managing water resources in NSW. The *Water Act 1912* has been progressively phased out and replaced by water sharing plans (WSPs) under the *Water Management Act 2000* (WM Act), with the exception of monitoring bores.

Northparkes holds a number of bore licences under the Water Act 1912 for monitoring bores at Northparkes Mines, as detailed in Appendix C.

3.4 Water Management Act 2000

The Water Management Act (WM Act) is administered by DPE Water and NRAR. The aim of the WM Act is to ensure that water resources are conserved and properly managed for sustainable use benefiting both present and future generations. Fresh water sources throughout NSW are managed via WSPs under the WM Act. Key rules within the WSPs specify when licence holders can access water and how water can be traded.

An amendment to the WM Act (Section 60I) came into effect on 1 March 2013. This amendment provides that it is an offence for a person without an access licence to take, remove or divert water from a water source or relocate water from one part of an aquifer to another part of an aquifer in the course of carrying out a mining activity. Various activities are captured by the provisions of the amendment including mining, mineral exploration and petroleum exploration.

WSPs relevant to the Northparkes Mines site are The Macquarie Bogan Unregulated and Alluvial Water Sources and the NSW Murray Darling Basin Fractured Rock Groundwater Sources. Operations at Northparkes are supported by external water sources supplied by water regulated by the WSPs for the Lachlan Regulated River Water Source and the Lachlan Unregulated and Alluvial Water Sources.

Water access licences (WALs) and works approvals held by Northparkes are summarised in Table 2.

Table 2 Water access licences and works approvals

WAL	Water source	Management Zone	Category (security)	Share components	Nominated works approval
43208	Lachlan Regulated River Water Source	That Part Of The Water Source Upstream Of Lake Cargelligo Weir	Regulated River (High Security)	1,305	70WA600026
43207			Regulated River (General Security)	3,463	
34955	Lachlan Fold Belt Mdb Groundwater Source		Aquifer	232	80WA718412
32138	Upper Lachlan Alluvial Groundwater Source	Upper Lachlan Alluvial Zone 3 Management Zone	Aquifer	1110	70CA613938
32120				1050	70CA613702
32004				1600	70CA613802
31969				1728	70CA613936
31963				700	70CA613868
31930				600	70CA613874
31850				500	70CA613780
31863		Upper Lachlan Alluvial Zone 5 Management Zone	Aquifer	534	70CA614066



3.5 Dam Safety Act 2015

Dam safety is regulated by Dam Safety NSW under the Dam Safety Act 2015 (DS Act). A 'declared dam' is a dam gazetted in accordance with Section 4 of 2019 regulations of the DS Act.

The 'Northparkes Rosedale Tailings' (Rosedale TSF), 'Northparkes Tailings Dam No 2' (TSF2), 'Northparkes Tailings' (TSF1), 'Northparkes Infill Tailings Storage Facility' (Infill TSF) and 'Northparkes E27-Estcourt Tailings' (Estcourt TSF) are declared dams, pursuant to Declared Dams Order 2021 (NSW Government gazette number 164).

Requirements for tailings dams relevant to water management are described in Section 4.

3.6 Guidelines and policies

Guidelines and policies relevant to surface water described in Appendix B are:

- *Managing Urban Stormwater, Soils and Construction* (Blue Book) (Landcom 2004)
- *Guidelines for controlled activities on waterfront land* (NRAR 2018; formerly DPI 2007)
- *Why Do Fish Need to Cross the Road? Fish Passage Requirements for Waterway Crossings* (NSW Fisheries 2003)
- *Environmental Guidelines – Management of Tailings Storage Facilities* (VIC DPI 2006)

Guidelines and policies relevant to groundwater described in Appendix C are:

- *NSW Aquifer Interference Policy* (NOW 2012c)
- *Australian and New Zealand Guidelines for Fresh and Marine Water Quality* (ANZG 2018)
- *Groundwater Sampling and Analysis – A Field Guide* (Geoscience Australia 2009)

4. WATER MANAGEMENT

This section provides a brief outline of the various components of water management at Northparkes, as identified in Figure 1, and where to find further details if required.

4.1 Site water balance

Northparkes' water supply is from:

- External supply from the Lachlan River and the Lachlan borefield, in cooperation with Parkes Shire Council (refer to Section 3.4 for description of security);
- Dirty and contaminated surface runoff captured, contained and recirculated by the surface water management system;
- Groundwater intercepted during underground and open cut mining operations.

Contingency measures for drought and flood scenarios are described in Section 4.5.

Water is used for the following activities at Northparkes Mines:

- Ore processing;
- Underground mining;
- Dust suppression;
- Wash-down areas;
- Construction purposes;
- Exploration and evaluation; and
- Domestic use, including potable water.

A portion of water used is unavoidably lost to evaporation, copper concentrate or retained in tailings. The recycling of water from ore processing and mining is maximised to minimise the clean water use on site.

Water	NPO-ENV-MPL-0010	Version Control: 13	Date Published: 30/06/2025
<i>Document is UNCONTROLLED when printed</i>			Page 15 of 47



Northparkes is a nil discharge site for contaminated water, however, there remains the potential for off-site discharge due to rainfall events that exceed the design criteria of the dirty water management system.

Northparkes maintains a site water balance model to track inputs, throughputs and outputs of water, based on observed rainfall, flow meters and water storage volumes. The Northparkes water balance is reviewed and updated each calendar year and reported through the Annual Review process (refer to Section 4.12).

The annual average water balance for the current operations at the site is summarised in Table 3.

Table 3 Annual average water balance

	Average annual flow (ML)
INFLOWS	
Raw water from Lachlan borefield and Lachlan River	3041
Direct rainfall and catchment runoff	1915
Groundwater intercepted by underground workings	153
TOTAL INFLOWS	5109
OUTFLOWS	
Evaporation	1513
Entrained in tailings	3027
Operational raw water losses, including dust suppression	211
Product concentrate	33
Potential off site discharges	23
Compensatory Water Supplies	0
TOTAL OUTFLOWS	4808
CHANGE IN STORAGE	
Build up of on site water inventory	301
TOTAL CHANGE IN STORAGE	301

Table 3 shows an average annual increase in surface water inventory, which reflects a deliberate operational strategy to build up on site water inventory within water storage capacity not required for environmental containment as a contingency drought measure.

4.2 Water Contingency Planning.

Northparkes response to water contingency events (flood and drought) is specified in the Northparkes Procedure Flood and Drought Trigger Action Response Plan (TARP) [NPO-PRO-PRO-0009](#)

4.3 Surface water management

Surface water management at Northparkes Mines includes:

- Dams, drains, pumps and pipelines that divert clean water around and capture, contain and recirculate dirty and contaminated from the disturbed areas of the site.
- Surface water monitoring programs that identifies potential impacts of operations on the surrounding environment.

Surface water management is described in the Surface Water Management Plan (SWMP) in Appendix B.

4.4 Groundwater management

Groundwater management at Northparkes Mines includes:

- Pumps and pipelines for the extraction of groundwater intercepted in underground mining areas

Water	NPO-ENV-MPL-0010	Version Control: 13	Date Published: 30/06/2025
<i>Document is UNCONTROLLED when printed</i>			Page 16 of 47



- Monitoring bores and groundwater monitoring programs that identifies potential impacts of operations on the surrounding environment.

Groundwater management is described in the Groundwater Management Plan (GWMP) in Appendix C.

4.5 Trigger Action Response Plans

The Northparkes water Trigger Action Response Plans (TARPs) set out the actions and responses that will occur if the surface or groundwater impact assessment criteria are exceeded. Surface water triggers are based on the SRK report (2016) as described in the SWMP. TARPs are included in Appendix D.

4.6 Compensatory Water Supply

Northparkes will comply with the provisions of Schedule 3, Condition 20 of DC 11_0060 requiring the supply of compensatory water to neighbouring landholders if determined to have been both adversely and directly impacted as a result of the project. Reporting requirements related to water management are summarised in Table 4 and detailed in this section.

Table 4 Northparkes reporting requirements.

Report	Frequency	Water Information Reported	Recipient
Community Consultative Committee	Biannual	Discussion of water management performance	Representatives from a cross-section of the community
Annual Return	Annual	Statement of Compliance and summary of monitoring and complaints recorded over the 12 month reporting period	Environment Protection Authority
Annual Review	Annual	Monitoring results for surface water quality, groundwater quality and groundwater levels; assessment of water management system performance	Government agencies; public via the Northparkes website
National Pollution Inventory	Annual	Monitoring results for surface water quality and groundwater quality	Shareholders; public via the Northparkes website
Independent Environmental Audit	Every 3 years	Performance of the project in relation to the water management requirements of DC 11_0060	The Secretary, Department of Planning and Environment, within 3 months of completion.

4.7 Incident Management and Reporting

The Incident Management Procedure ([NPO-OHS-PRO-0048](#)) specifies the management of any incident which occurs within the Project Area or is associated with operations at Northparkes. In addition, the response to any pollution incident is specified in the Northparkes Pollution Incident Response Management Plan (PIRMP).

All incidents must be reported by the employee or contractor who has been associated with or witnessed the incident.

In accordance with the requirements of Incident Management Procedure, EPL 4784 and the PIRMP, Northparkes, its employees or contractors must notify the EPA of incidents causing or threatening material harm to the environment immediately after the person becomes aware of the incident. Notifications must be made in accordance with the PIRMP and include telephoning the Environment Line service on 131 555. Northparkes must also provide written details about the notification to the EPA within seven days of the incident.

Northparkes must notify DPE - Water in writing immediately upon becoming aware of a breach of any conditions set out in WALs held by Northparkes.

Northparkes must also notify the Department of Planning, Housing and Infrastructure within 7 days of becoming aware of any non-compliance in accordance with Schedule 6, Condition 7A of DC 11_0060.

4.8 Environmental protection licence

In accordance with Section 66(6) of the POEO Act and requirements issued by the EPA, Northparkes must publish water quality monitoring data that has been collected as a result of EPL 4784 requirements. A summary of all monitoring results are made publicly available at the mine and on the Northparkes website and is updated on a quarterly basis.

Water	NPO-ENV-MPL-0010	Version Control: 13	Date Published: 30/06/2025
<i>Document is UNCONTROLLED when printed</i>			Page 17 of 47



4.9 Water access licences

Northparkes will keep a record of the volume of water extracted under its WALs (refer to Section 3.4). As required by the conditions set out in the licenses, the record must be kept for at least five years and be produced for inspection when requested by DPE Water. The record must include the following details:

- The date and period of time during which water is taken under the licence.
- The volume of water taken.
- The water supply work approval number of the water supply work used to take the water; and
- The purpose for which the water was taken.

4.10 Complaints

The Stakeholder Communications Management Plan ([NPO-CSR-PLN-0004](#)) and the Community Complaint Notification Form ([NPO-CSR-FRM-0004](#)) specify Northparkes management of and response to complaints.

In accordance with the requirements of EPL 4784, Northparkes must keep a record of any complaint made to Northparkes or any employee or agent of Northparkes in relation to pollution arising from any Northparkes activities. The record of complaint must be kept for at least four years and must include the following details:

- The date and time of the complaint.
- The method by which the complaint was made.
- Any personal details of the complainant which were provided by the complainant or, if no such details were provided, a note to that effect.
- The nature of the complaint.
- The action taken by Northparkes in relation to the complaint, including any follow up contact with the complainant.
- If no action was taken by Northparkes, the reasons why no action was taken.

4.11 Annual return

An annual return must be provided to the EPA in accordance with the requirements of EPL 4784 comprising a Statement of Compliance and a summary of monitoring and complaints recorded over the 12 month reporting period.

4.12 Annual review

Northparkes will prepare an annual review that reviews the performance of operations at Northparkes against the requirements of the WMP, provides an overview of environmental management actions taken and summarises the monitoring results over the 12 month reporting period. The annual review typically includes the following elements specific to water management:

- Any amendments to licensing or statutory approvals.
- A summary of any complaints or incidents relating to the performance of the water management system.
- A summary of the monitoring results collected over the reporting period and assessment against any relevant criteria.
- A summary of the water take under all WALs held by Northparkes.
- An evaluation of any trends in the monitoring results occurring across the site.
- Identification of any discrepancies between the predicted and actual impacts of the Project and an analysis of the potential cause of any significant discrepancies;
- Any non-compliance recorded during the reporting period.
- An update of the site water balance.
- A summary of management actions to be implemented over the next year to improve the

Water	NPO-ENV-MPL-0010	Version Control: 13	Date Published: 30/06/2025
Document is UNCONTROLLED when printed			Page 18 of 47



environmental performance of the project.

4.13 Independent Environmental Audit

Every 3 years Northparkes commissions an Independent Environmental Audit to be conducted in accordance with the requirements of Schedule 6, Condition 9 of DC 11_0060.

This audit covers all aspects of water management within the operations.

Within 3 months of commissioning this audit, or as otherwise agreed by the Secretary, Northparkes will submit a copy of the audit report to the Secretary, together with its response to any recommendations contained in the audit report.

4.14 Access to information

Northparkes will make all water management information required by Condition 11 of DC 11_0060 publicly available via its website.

Water	NPO-ENV-MPL-0010	Version Control: 13	Date Published: 30/06/2025
Document is UNCONTROLLED when printed			Page 19 of 47



5. RESPONSIBILITIES

Personnel carrying out work under this water management plan must be familiar with the requirements of this document and comply with it in full. Roles and responsibilities for this WMP are detailed in Table 5.

Table 5 Roles and Responsibilities

Role	Responsibility
General Manager	– Provide resources required to implement the WMP
Mine Manager Production Manager	– Management and maintenance of water management infrastructure
Sustainability Manager	– Ensure the WMP is reviewed on an annual basis or any major changes in the operations.
Environment Team	– Undertake environmental monitoring as required – Investigate and water related incidents – Undertake required reporting (AR, EPL) and incident reporting
Risk Exposure Group - Environment	– Lead water management on site – Ensure coordination and progression of water related projects, actions and planning needs at the operation.

6. REVIEW

In accordance with Schedule 6, Condition 5 of DC 11_0060, within 3 months of:

- the submission of an Annual Review;
- the submission of an incident report;
- The submission of an audit; or
- Any modification to the conditions of DC 11_0060 (unless the conditions require otherwise),

Northparkes will review, and if necessary, revise this WMP. Where the review leads to revision of the plan, then within four weeks of the review, the revised document will be submitted to the Secretary for approval.

7. RELATED DOCUMENTS

Document Title	Doc ID No.
Northparkes Incident Management Procedure	NPO-OHS-PRO-0048
Northparkes Flood and Drought TARP	NPO-PRO-PRO-0009
Northparkes Incident Reporting Procedure	NPO-OHS-PRO-0048
Environment Measuring and Monitoring Procedure	NPO-ENV-PRO-0004
Environment Monitoring and Measuring Schedule	NPO-ENV-REG-0001
Northparkes Surface Water Management Plan	NPO-ENV-MPL-0002
Northparkes Groundwater Management Plan	NPO-CSR-MPL-0007



8 REFERENCES

ANZECC and ARMCANZ (2000) *Australian and New Zealand Guidelines for Fresh and Marine Water Quality*, Australia and New Zealand Environment and Conservation Council and Agriculture and Resource Management Council of Australia and New Zealand, Canberra.

ANZG. (2018). *Australian and New Zealand Guidelines for Fresh and Marine Water Quality Default Guideline Values*. Australian and New Zealand Governments.

Department of Primary Industries (Victoria) (2006) *Environmental Guidelines – Management of Tailings Storage Facilities*.

DPI (2012) *NSW Aquifer Interference Policy*, Department of Primary Industries Office of Water

Geoscience Australia (2009) *Groundwater Sampling and Analysis – A Field Guide*. Retrieved from http://www.ga.gov.au/webtemp/image_cache/GA15501.pdf

Landcom (2004), *Managing Urban Stormwater: Soils and Construction – Volume 1*, 4th Edition, Landcom NSW.

NRAR (2018), *Controlled Activities on Waterfront Land: Guidelines for Riparian Corridors on Waterfront Land*, Natural Resources Access Regulator, NSW Department of Industry. Retrieved from https://www.industry.nsw.gov.au/_data/assets/pdf_file/0004/156865/NRAR-Guidelinesfor-controlled-activities-on-waterfront-land-Riparian-corridors.pdf

NSW Fisheries (2003) *Why Do Fish Need to Cross the Road? Fish Passage Requirements for Waterway Crossings*

SRK (2016) *Water Quality Trigger Levels for Surface and Groundwater – Northparkes Mine* [sic]

Water	NPO-ENV-MPL-0010	Version Control: 13	Date Published: 30/06/2025
Document is UNCONTROLLED when printed			Page 21 of 47



8. GLOSSARY

Term	Definition
Alluvial	Deposition from running waters.
Aquifer	The layer of rock that holds water and allows water to flow slowly through it.
Australian Height Datum	A common national surface level datum approximately corresponding to mean sea level.
Average recurrence interval	A statistical estimate of the average period in years between the occurrence of a flood of a given size or larger, e.g. floods with a discharge equivalent to the 1 in 100 year average recurrence interval flood event will occur on average once every 100 years.
Brackish water	Brackish water is water that has more salinity than fresh water, but not as much as seawater. Typically containing between 0.5 and 30 grams of dissolved salt per litre of water.
Block cave mining	A mining method in which an ore body is undercut by drilling and blasting and allowed to fall.
Bore	Constructed connection between the surface and a groundwater source that enables groundwater to be transferred to the surface either naturally or through artificial means.
Catchment	The land area draining through the main stream and tributary streams to a particular location.
Clean water	Water that has not come into physical contact with areas associated with mining, ore processing or tailings storage.
Contaminated water	Water associated with mining, ore processing and tailings storage.
Datum	A level surface used as a reference in measuring elevations.
Dewatering	Transfer of water from underground workings to the surface.
Dirty water	Water that contains an elevated sediment load.
Discharge	Quantity of water per unit of time flowing in a stream, for example cubic meters per second or megalitres per day.
Drawdown	A reduction in piezometric head within an aquifer.
Electricity conductivity	A measure of the concentration of dissolved salts in water.
Ephemeral	Stream that is usually dry, but may contain water for rare and irregular periods, usually after significant rain.
Flood	Relatively high stream flow which overtops the natural or artificial banks in any part of a stream, river, estuary, lake or dam, and/or overland runoff before entering a watercourse and/or coastal inundation resulting from super elevated sea levels and/or waves overtopping coastline defences.
Fractures	Cracks within the ground strata, either natural or resulting from underground mining works.
Groundwater	Water in a saturated zone, stratum or aquifer beneath the surface of the land.
Guideline	Numerical concentration or narrative statement that provides appropriate guidance for a designated water use or impact.
Hardness	The concentration of multivalent cations present in water. Generally hardness is a measure of the concentration of calcium and magnesium ions in water and is expressed in units of calcium carbonate (CaCO ₃) equivalent. Hardness may influence the toxicity and bioavailability of substances in water.
Hydraulics	The physics of channel and floodplain flow relating to depth, velocity and turbulence.
Hydrogeology	The area of geology that deals with the distribution and movement of groundwater in soils and rocks.
Hydrology	The study of rainfall and surface runoff processes.
Infiltration	Natural flow of surface water through ground surfaces as a result of rainfall events.
pH	Value taken to represent the acidity or alkalinity of an aqueous solution. It is defined as the negative logarithm of the hydrogen ion concentration of the solution.
Potable water	Water of a quality suitable for drinking.
Riparian	Pertaining to, or situated on the bank of a river or other water body.
Risk	The chance of something happening that will have an impact upon objectives. It is measured in terms of consequence and likelihood.
Runoff	Amount of rainfall that ends up as streamflow.



Term	Definition
Sediment	Soil or other particles that settle to the bottom of lakes, rivers, oceans and other waters.
Surface water	Water that is derived from precipitation or pumped from underground and may be stored in dams, rivers, creeks and drainage lines.
Tailings	The by-product resulting from the processing of ore.
Topography	Representation of the features and configuration of land surfaces.
Trigger value	The concentration or load of physicochemical characteristics of an aquatic ecosystem, below which there exists a low risk that adverse ecological effects will occur. They indicate a risk of impact if exceeded and should 'trigger' action to conduct further investigations or to implement management or remedial processes.
Underground water	Water stored in underground aquifers. During the mining process a proportion of this water is released and managed by the underground settling and pumping system.



Appendices

Appendix A – Regulatory correspondence

On 1 September 2015, Northparkes received comments from Department of Planning and Environment (DPE) requesting Northparkes to amend additional information in the Water Management Plan. The comments are detailed in Table 6 along with Northparkes responses for each component of the Condition addressed within this document.

Table 6 Regulatory comments on 1 September 2015

Comment	Response
The WMP is still in draft form	Finalised
Include missing figures in the document	Figures included in finalised document
Include revision pages for all sub-plans	Included
Provide clear distinction between subplans required. Appendices for the whole plan (which are the subplans) can be confused with the appendices for the sub plans	Noted and changes made.
Have all EPA and DPI Water comments/recommendations been incorporated.	Included in Table 6

On 26 November 2015, Northparkes received comments from the DPE requesting Northparkes to amend further changes with the Management Plan submitted in October 2015. The comments are detailed in Table 7 along with Northparkes responses for each component of the Condition addressed within this document.

Table 7 Regulatory comments on 26 November 2015

Comment	Response
References to NSW Office of Water (NOW) to be updated to DPI Water.	Updated.
As detailed in previous correspondence, Table 3 which displays <i>Water Act 1912</i> licences includes only a subset of current licences held at the site. It is recommended the complete list of licences provided with the previous response and attached to this response be reviewed. Where bores have been decommissioned notification is required to DPI Water to cancel relevant licences.	All bore licence information is provided in the GWMP.
It is recommended Section 10.1 and 10.2 which relates to exceedances of surface and groundwater triggers also include DPI Water as a notification agency.	Amended. Regulator notification is now managed as part of the TARPs in Appendix G.
Section 11.2 refers to Northparkes's requirement to keep a record of volumes related to WALs for water extraction at the Lachlan borefield and the Lachlan River. This section also needs to include a reference to the requirement for record keeping associated with WALs for water take in the pits and the underground.	Complete. WALs information is addressed in Section 11.2 [now Section 3.4]

On 21 April 2016, Northparkes received comments from the DPE requesting Northparkes to amend further changes with the Management Plan to include EPA comments. The comments are detailed in Table 8 along with Northparkes responses for each component of the Condition addressed within this document. Additional comments from EPA were received on the WMP, Groundwater Management Plan and Surface Water Management Plan following the submission of updated documents on 20, October 2016. These comments are detailed in Table 9.



Table 8 Regulatory comments on 21 April 2016

Aspect	EPA Comment	Response
Surface water quality trigger criteria	<i>"In the event that the site is required to undertake controlled discharges from the mine, the identification of site-specific trigger values should be determined to indicate the required values that should be met of the water expected to be discharged."</i>	Northparkes advises that there will be no controlled discharge from the mine. In the event of any controlled discharge, Northparkes will liaise with EPA for approval or licence variation where necessary.
	The EPA notes that no controlled discharges are proposed and advises that any controlled discharges would require an application for a licence variation and will not be considered as part of the current proposal.	
	The proposed trigger criteria are intended to prompt management actions in response to contamination of the clean water system, dirty water system, and groundwater. The Plan does not provide an appropriate description of how the trigger criteria were calculated, but it appears that a conservative approach was not taken. Trigger criteria were selected from local watercourse site data or an ANZECC trigger, whichever value was furthest from the ideal range. The Plan indicated that two of the five watercourse sites used to derive site specific trigger criteria were typically dry and were only included in limited sampling rounds. Data from these two sites were the basis for 15 of the 26 trigger criteria. Some of the resulting trigger criteria are very high, including turbidity, copper, aluminium, and iron, being 52, 49, 1179, and 170 times the relevant ANZECC (2000) trigger values respectively. This suggests that some of the watercourse sites may have potentially been impacted by contamination from mining operations.	In April 2016, Northparkes engaged SRK Consulting Pty Ltd to review the previous trigger levels. The revised surface water trigger values have been determined by statistical analysis of the historical water quality record for a specific sampling location or grouping of locations.
	If the trigger criteria are intended to provide an early warning of contamination so as to trigger management actions, then values should be set conservatively, providing an indication of where levels fall outside the ambient range and pose a risk. The EPA recommends that if local data are used to develop trigger criteria, then reference sites that have not been affected by mining operations and where sufficient monitoring data is available should be used. This should be done in-line with ANZECC (2000), and the methodology used should be explained in the Plan. Alternatively, the default triggers provided in ANZECC (2000) should be used as trigger criteria for clean area farm dams and watercourses.	In April 2016, Northparkes engaged SRK Consulting Pty Ltd to review the previous trigger levels. The revised surface water trigger values have been determined by statistical analysis of the historical water quality record for a specific sampling location or grouping of locations.
Groundwater trigger criteria	The plan indicates that the ANZECC (2000) livestock drinking water triggers will be applied to data from some monitoring bores, while <i>"for all other monitoring bores the trigger criteria have been determined from statistical analysis of historical water quality data"</i> . The plan should explain how the trigger criteria were calculated.	Groundwater quality trigger criteria developed based on the stock drinking guidelines and statistical analysis of historical data. Refer to GWMP in Appendix D.



NPO - Northparkes

Water

MPL - Management Plan



Aspect	EPA Comment	Response
Monitoring	The Plan proposes that monitoring of surface water will occur at a minimum frequency of once yearly for farm dams, watercourses and the contaminated water system (for most analytes). The EPA recommends that, where there is sufficient water to sample, surface water and groundwater should be monitored quarterly at a minimum.	Amended. The surface water monitoring program in Appendix C includes quarterly monitoring for all surface water monitoring locations.
	The Plan also proposes surface water quality monitoring should only be undertaken when a sample depth of at least 0.3m can be achieved. The EPA recommends that, rather than setting a minimum depth requirement, surface water quality monitoring should be undertaken in such a way as to avoid disturbing bottom sediments or sampling surface material. This will increase the number of samples that may be collected.	Amended. The surface water monitoring program in Appendix C includes a procedure for sampling surface face without disturbing the bottom sediments.
Triggers and Management Responses	The Plan proposes that surface water quality stage 1 and stage 2 triggers will be reached after a trigger criterion is exceeded for 2 monitoring rounds. The EPA recommends that the triggers should be reached when a trigger criterion is exceeded once, reducing the management response time from 6 to 3 months if surface water is monitored quarterly.	Amended. Stage 1 trigger based on a single exceedance as per TARPs in Appendix G..
	The Plan proposes that groundwater quality stage 1 and stage 2 triggers will be reached after a trigger criterion is exceeded for 2 and 4 monitoring rounds respectively. The EPA recommends that the stage 1 trigger should be reached when a trigger criterion is exceeded once, while the stage 2 trigger should be reached when a trigger criterion is exceeded for 2 monitoring rounds, reducing the management response time from 12 to 6 months if groundwater is monitored quarterly.	Amended. Stage 1 trigger based on a single exceedance as per TARPs in Appendix G..
	The management actions proposed as responses to surface water and groundwater quality triggers appear inadequate. The EPA recommends that management responses should include a requirement for the proponent to report to and consult with relevant agencies in response to deteriorating water quality in watercourses, farm dams, and groundwater.	Amended. Notification and consultation with regulators included in TARP responses in Appendix G.
Cross-contamination of the contaminated, dirty and clean water systems	The EPA considers that the potential for contamination of the clean and dirty water systems has not been adequately addressed in the Plan. The Plan did not provide detailed monitoring results and only included general discussions comparing water quality at monitoring sites to "water quality objectives". The "water quality objectives" were not appropriate reference values to identify contamination, being based on data collected during 2009-2011 and potentially influenced by site operations.	All water quality monitoring results are reported in Annual Environment Monitoring Report, Quarterly Environment Report and EPL Annual Returns annually. Monitoring results are compared to trigger values as described in the TARPs in Appendix G.



NPO - Northparkes

Water

MPL - Management Plan



Aspect	EPA Comment	Response
Clean water system	<p>The Plan should examine whether contamination of the clean water system has occurred and/or is occurring, providing a comparison of surface water quality against the ANZECC (2000) default triggers or site specific triggers. If site specific triggers are to be used, these should be developed in line with ANZECC (2000) and the methodology explained in the Plan. If contamination is suspected in the Clean water system, potential causes should be explored and management responses proposed in the Plan.</p>	<p>No indication of contamination of receiving water was identified during the EA assessment or the SRK (2016) trigger report.</p> <p>The trigger levels including for Cu, EC and TDS for the clean water system have been set considerably lower than for the other water management systems. This will indicate if there is any contamination of the clean water system.</p>
Dirty water system	<p>The EPA recommends that any assessment of the dirty water system should focus on contaminants likely to be generated from contamination and ore processing areas, rather than disturbed areas alone. The EPA considers that some components of the dirty water system may be contaminated, with levels of some contaminants greater than would be expected for run-off from uncontaminated disturbed areas.</p> <p>The Plan proposes that "dirty water" storages at the site should be designed based on Volume 2E of "Managing Urban Stormwater, Soil and Construction" and therefore the overflow frequency is related to erosion and sediment control. Volume 2E states that: "Areas where runoff may be polluted by contaminants other than sediment should be provided with separate drainage and treatment facilities". Volume 2E overflow frequency is, therefore, not appropriate for waters that have elevated levels of contaminants.</p> <p>Accordingly, the EPA considers that the proposed design and operation of the dirty water system is not appropriate to prevent discharge of contaminated water. The EPA recommends that management action is implemented to reduce current levels of contaminants in dirty water storages and prevent levels of contaminants returning to elevated levels. Until this management action occurs it is recommended that the dirty water system is managed as part of the contaminated water system. Specifically, the dirty water system should have a nil discharge requirement with an overflow frequency consistent with a contaminated water area rather than a sediment control area.</p>	<p>Northparkes has undertaken an upgrade of the water infrastructure onsite. Refer to Appendix C.</p> <p>Further upgrades and reviews of the water management system will occur as a response to changes in site layout, i.e. tailings dams wall lifts or rehabilitation commencement/completion.</p>



Table 9 EPA Comments 24 November 2016

EPA Comment	Response
Water Management Plan	
The Site Water Balance should be reviewed and updated annually. Where is this described?	Refer to Section 4.12
Main report section 5.0 references WALs in Appendix G but they are not listed in Appendix G.	WALs held by Northparkes are summarised in Section 3.4
Section 8.4 includes an incomplete sentence.	Sentence updated.
Surface Water Management Plan	
Given Caloola Ponds are located on the boundary and relatively near Cookopie Creek, is any monitoring proposed for the ponds/creek?	The surface water monitoring program included in Surface Water Management Plan (Appendix C) updated to include two additional monitoring locations WC15 and WC16.
Clarify monitoring frequency in Table 7.	Quarterly monitoring frequency is specific in the surface water monitoring program included in Surface Water Management Plan (Appendix C).
How will water course stability be measured and monitored? Section 8.5 of the main report refers to a field monitoring sheet template which does not appear to be included in the WMP or appendices. Will photographic records be used? Section 8.5 of the main reports suggests so, but section 10.2 of the SWMP is more ambiguous on that question.	The Surface Water Management Plan (Appendix C) includes a field monitoring sheet for watercourse stability. The watercourse stability monitoring program in the Surface Water Management Plan (Appendix C) includes a requirement for photograph to be taken of water course assessments..
Groundwater Management Plan	
Section 12.1.2 is not clear. An AEMR should be completed annually.	The requirements of the Annual Review are included in Section 4.12.

Table 6 EPA Comments 16 March 2017

EPA Comments	Response
The proposed trigger value criteria appear appropriate. As recommended in the SRK report, the 2-3 sigma approach should be reviewed and updated on an annual basis to assess its reliability and robustness in detecting change.	Section 6 provides a mechanism to review the trigger values.
Under the proposed Trigger Exceedance Response Plan, there is no specific action required in response to a Stage 1 exceedance under either surface water or groundwater monitoring requirements. It is recommended that, at a minimum, a consecutive Stage 1 exceedance should trigger a response equivalent to a Stage 2 exceedance to ensure that the exceedance is investigated and an appropriate management response provided.	The TARPS in Appendix F include a trigger for consecutive Stage 1 response to escalate to Stage 2 Trigger
As indicated in the EPA's letter, the EPA considers that some components of the dirty water system are likely to be contaminated with levels of some contaminants greater than would be expected for run-off from uncontaminated disturbed areas.	The Surface Water Management Plan in Appendix C documents the upgrades to achieve the design criteria of each storage in the surface water management system undertaken to date.
Page 16 of the WMP states that the dirty water storages are designed based on a 1hr, 20yr ARI. The SWMP refers to design criteria for dirty water storages being sized to capture 90 th percentile 5 day management period rainfall (table 10). Following this, the SWMP (section 13.1.3 Settlement and retention pond upgrades) refers to upgrades being conducted at some components of the Northparkes Water Management System. It is unclear if this includes all the components of the dirty water system	The upgrades to the site Retention ponds and Sediment ponds has been based various assessment, including internal risk assessment. These upgrades are ongoing and are staged based on risk and capital planning. The Surface Water Management Plan in Appendix C documents the upgrades to achieve the design criteria of each storage in the surface water management system undertaken to date.



NPO - Northparkes

Water

MPL - Management Plan



EPA Comments	Response
It is recommended that Northparkes clarify which dirty water system components are sized based on managing contaminated water (eg 1hr, 20 yr ARI) and which components of the dirty water system will be upgraded as part of ongoing site upgrades and responses to site layout changes.	The Surface Water Management Plan in Appendix C documents the upgrades to achieve the design criteria of each storage in the surface water management system undertaken to date.

Water	NPO-ENV-MPL-0010	Version Control: 13	Date Published: 30/06/2025
Document is UNCONTROLLED when printed			Page 29 of 47




NPO - Northparkes

Water

MPL - Management Plan



EPA Comments 28 Jul 2023

Post Approval Review				
 <p>Documents: Site – Surface Water Management Plan - Northparkes Reviewed: 28/07/2023</p>				
Condition	Sufficient (Yes/No/Partial)	Document reference and comment	Action Required	Company Response
Water Supply <u>Schedule 3, Condition 19</u> The Proponent shall ensure that it has sufficient water for all stages of the project, and if necessary, adjust the scale of operations on site to match its available water supply. <i>Note: Under the Water Act 1912 and/or the Water Management Act 2000, the Applicant is required to obtain the necessary water licences for the project.</i>	No		Please include this condition to Table 1 – Water Management Plan requirements Include this condition and detail the methods and process to ensure there is sufficient water for all stages to the project.	Table 1 updated with condition and references to process details
Compensatory Water Supply <u>Schedule 3, Condition 20</u> The Proponent shall provide a compensatory water supply to any landowner of privately owned land whose water supply is adversely and directly impacted (other than an impact that is negligible) as a result of the project, in consultation with DPE Water, and to the satisfaction of the Secretary. The extent of adverse impact on water supply must be investigated in accordance with the procedures outlined in Condition 4 of Schedule 5. The compensatory water supply measures must provide an alternative long-term supply of water that is equivalent to the loss attributable to the project. Equivalent water supply should be provided (at least on an interim basis) within 24 hours of the loss being identified, unless otherwise agreed with the landowner. If the Proponent and the landowner cannot agree on the measures to be implemented, or there is a dispute about the implementation of these measures, then either party may refer the matter to the Secretary for resolution. If the Proponent is unable to provide an alternative long-term supply of water, then the Proponent shall provide alternative compensation to the satisfaction of the Secretary.	No		Please include this condition to Table 1 – Water Management Plan requirements Include this condition into Management Plan, and detail any (if) compensatory water supply to landowners.	Table 1 updated with condition and references to process details
Water Pollution <u>Schedule 3, Condition 21</u> Unless an EPL authorises otherwise, the Proponent shall comply with Section 120 of the POEO Act.		Not Applicable		

1

Water	NPO-ENV-MPL-0010	Version Control: 13	Date Published: 30/06/2025
Document is UNCONTROLLED when printed			Page 30 of 47



NPO - Northparkes

Water

MPL - Management Plan



Post Approval Review



Planning &
Environment

Documents: Site – Surface Water Management Plan - Northparkes
Reviewed: 28/07/2023

Condition	Sufficient (Yes/No/ Partial)	Document reference and comment	Action Required	Company Response
Water Management Performance Measures <u>Schedule 3, Condition 22</u> The Proponent shall comply with the performance measures in Table 6 to the satisfaction of the Secretary.				
Water Management - General • Minimise the use of clean water on site		Entire WMP Document		
Construction and operation of linear infrastructure • Design, install and maintain erosion and sediment controls generally in accordance with the series Managing Urban Stormwater: Soils and Construction • Design, install and maintain the infrastructure within 40 m of watercourses generally in accordance with the Guidelines for Controlled Activities on Waterfront Land (DPI 2007) • Design, installation and maintenance of creek crossings generally in accordance with the Policy and Guidelines for Fish Friendly Waterway Crossings (NSW Fisheries, 2003) and Why Do Fish Need To Cross The Road? Fish Passage Requirements for Waterway Crossings (NSW Fisheries 2003)	Partial	Erosion and Sediment control – Section 5.2 Document references Section 5.	No details on infrastructure within 40m of watercourses detailed in Document. Please include details of this within Section 5 Document does not identify the design, installation and maintenance of creek crossings. Please include details of this within Section 5	SWMP sections 5.1.3, 5.2 updated with relevant detail
Clean water management system • Design, install and maintain the clean water system to capture and convey the 100 year ARI flood • Maximise the diversion of clean water around disturbed areas on site	Yes	Section 4.2 Section 5.1.1		
Dirty water management system • Design, install and maintain the dams generally in accordance with the series Managing Urban Stormwater: Soils and Construction – Volume 1 and Volume 2E Mines and Quarries • Designed to capture the 90th percentile 5-day duration rainfall event	Yes	Section 5 – Table 2 (Surface Water Management Plan)		
Contaminated water management system	Yes	Section 5		



NPO - Northparkes

Water

MPL - Management Plan



Post Approval Review



Planning &
Environment

Documents: Site – Surface Water Management Plan - Northparkes
Reviewed: 28/07/2023

Condition	Sufficient (Yes/No/ Partial)	Document reference and comment	Action Required	Company Response
<ul style="list-style-type: none"> Nil discharge from site On-site storages (including tailings dams, mine infrastructure dams, groundwater storage and treatment dams) are suitably lined to comply with a permeability standard of < 1 x 10⁻⁹ m/s in line with the NSW Environmental Guidelines for Solid Waste Landfills (EPA, 1996) Design, construct and maintain other aspects of the tailings dams in accordance with the standards set out in the Environmental Guidelines – Management of Tailings Storage Facilities (VIC DPI, 2006), including a requirement to maintain a minimum freeboard of 600 mm or a sufficient freeboard to accommodate a 1 in 100- year ARI, 72 hour rainfall event without overtopping at all times, whichever is greater Design and construct the tailings storage facilities in accordance with the requirement of the Dam Safety Committee 		Infrastructure storage Table 2 (Section 5) – Surface Water Management Plan Section 5.1.14 Dam Safety Act 2015 – Section 3.4		
<u>Water Management Plan</u> <u>Schedule 3, Condition 23</u> The Proponent shall prepare and implement a Water Management Plan for the project to the satisfaction of the Secretary. This plan must:				
a) be prepared in consultation with DPE Water and the EPA, by suitably qualified and experienced persons whose appointment has been approved by the Secretary;	Yes	Appendix A outlines the correspondence with EPA		
b) be submitted to the Secretary for approval prior by 30 June 2014;		Not Applicable		



NPO - Northparkes

Water

MPL - Management Plan



Planning &
Environment

Documents: Site – Surface Water Management Plan - Northparkes

Reviewed: 28/07/2023

Post Approval Review

Condition	Sufficient (Yes/No/ Partial)	Document reference and comment	Action Required	Company Response
c) in addition to the standard requirements for management plans (see Condition 3 of schedule 6), this plan must include a: (i) Site Water Balance that: <ul style="list-style-type: none">includes details of:<ul style="list-style-type: none">sources and security of water supply, including contingency planning for future reporting periods;water use and management on site;reporting procedures, including the preparation of a site water balance for each calendar year;describes the measures that would be implemented to minimise clean water use on site;	Yes	Section 4.1 of Water Management Plan. Contingency plan – section 4.2		

Water	NPO-ENV-MPL-0010	Version Control: 13	Date Published: 30/06/2025
Document is UNCONTROLLED when printed			Page 33 of 47



NPO - Northparkes

Water

MPL - Management Plan



Post Approval Review



Planning &
Environment

Documents: Site – Surface Water Management Plan - Northparkes
Reviewed: 28/07/2023

Condition	Sufficient (Yes/No/ Partial)	Document reference and comment	Action Required	Company Response
<p>(ii) Surface Water Management Plan, that includes:</p> <ul style="list-style-type: none"> a) detailed baseline data on water flows and quality in the waterbodies that could be affected by the project; b) a detailed description of the water management system on site, including erosion and sediment controls; c) detailed plans, including design objectives and performance criteria, for the: <ul style="list-style-type: none"> a. tailings storage facilities; b. final voids (see the Rehabilitation Objectives in Table 8); d) detailed performance criteria for the following, including trigger levels for investigating any potentially adverse impacts associated with the project: <ul style="list-style-type: none"> a. the water management systems (clean, dirty and contaminated); b. downstream surface water quality; c. downstream flooding impacts; and d. stream and riparian vegetation health for Bogan River, Tenandra Creek, Goonumbra Creek and Cookopie Creek; e) a program to monitor and report on: <ul style="list-style-type: none"> a. the effectiveness of the water management systems (clean, dirty and contaminated); b. surface water flows and quality, stream and riparian vegetation health in the watercourses that could be affected by the project; and c. downstream flooding impacts; f) reporting procedures for the results of the monitoring program; and g) a plan to respond to any exceedances of the performance criteria, and mitigate any adverse surface water impacts of the project; 	Partial	<p>Surface Water Management Plan review</p> <ul style="list-style-type: none"> a) Section 4 and 7 b) Section 5.2 c) Section 5.1.14 <p>Document references "Final voids managed by the Closure Management Plan"</p> <ul style="list-style-type: none"> d) Section 8 e) Section 6 (entire) f) Section 9 Not detailed within SWMP (References Section 6 WMP) g) 8.4 which details TARP's appendix D 	<p>Part c) Please include details, designs, and performance criteria of Final Voids into Surface Water Management Plan. We note there are some objectives for tailings in Section 5.1.14, however these are not detailed and there is no criteria to meet this condition.</p> <p>Part f) Reporting procedures not detailed in the Surface Water Management Plan as required by this condition. Document References Section 6 of the Water Management Plan. Section 6 of the WMP is Responsibilities, not Reporting as referenced in the SWMP.</p> <p>Please include details of the reporting procedures to Section 9 of the SWMP.</p> <p>WMP section 5.6 (Annual Review) includes reporting monitoring results.</p>	<p>Section 5.1.15 added to detail Subsidence zones. Referenced to Rehabilitation MP for Voids and Subzone detail has been included</p> <p>Reference to the WMP and reporting requirements has been clarified in Section 9.</p>



NPO - Northparkes

Water

MPL - Management Plan



Post Approval Review



Planning &
Environment

Documents: Site – Surface Water Management Plan - Northparkes
Reviewed: 28/07/2023

Condition	Sufficient (Yes/No/ Partial)	Document reference and comment	Action Required	Company Response
<p>(iii) Groundwater Management Plan, that includes:</p> <ul style="list-style-type: none"> detailed baseline data on groundwater levels, yield and quality in the region and privately-owned groundwater bores that could be affected by the project; groundwater assessment criteria, including trigger levels for investigating any potentially adverse groundwater impacts; a program to monitor and report on: <ul style="list-style-type: none"> groundwater inflows to the block cave, sub-level cave and open cut mining operations; the seepage/leachate from water storages, emplacement and final voids; background changes in groundwater yield/quality against mine-induced changes; impacts of the project on: <ul style="list-style-type: none"> (i) regional and local (including alluvial) aquifers; (ii) groundwater supply of potentially affected landowners; and (iii) riparian vegetation; a program to validate the groundwater model for the project, and comparison of monitoring results with modelled predictions; and a plan to respond to any exceedances of the groundwater assessment criteria. 	Yes	<p>a) Baseline Data – Section 7 b) Triggers -Section 8 c) Section 6.1, 6.2 and 11.1 d) GWMP – references TARPS – appendix 4. Table 5 details the groundwater triggers for Northparkes</p>		

Water	NPO-ENV-MPL-0010	Version Control: 13	Date Published: 30/06/2025
Document is UNCONTROLLED when printed			Page 35 of 47



NPO - Northparkes

Water

MPL - Management Plan



Planning &
Environment

Documents: Site – Surface Water Management Plan - Northparkes
Reviewed: 28/07/2023

Post Approval Review

Condition	Sufficient (Yes/No/ Partial)	Document reference and comment	Action Required	Company Response
<p>Management Plan Requirements Schedule 6 Condition 3</p> <p>The Proponent shall ensure that the management plans required under this approval are prepared in accordance with any relevant guidelines, and include:</p> <p>a) detailed baseline data;</p> <p>b) a description of:</p> <ul style="list-style-type: none"> the relevant statutory requirements (including any relevant approval, licence, or lease conditions); any relevant limits or performance measures/criteria; the specific performance indicators that are proposed to be used to judge the performance of, or guide the implementation of, the project or any management measures; <p>c) a description of the measures that would be implemented to comply with the relevant statutory requirements, limits, or performance measures/criteria;</p> <p>d) a program to monitor and report on the:</p> <ul style="list-style-type: none"> impacts and environmental performance of the project; effectiveness of any management measures (see c above); <p>e) a contingency plan to manage any unpredicted impacts and their consequences;</p> <p>f) a program to investigate and implement ways to improve the environmental performance of the project over time;</p> <p>g) a protocol for managing and reporting any:</p> <ul style="list-style-type: none"> incidents; complaints; non-compliances with statutory requirements; and exceedances of the impact assessment criteria and/or performance criteria; and <p>h) a protocol for periodic review of the plan.</p>	Yes	<p>A SWMP – Section 7 - Baseline Data GWMP – Section 7 – Baseline data</p> <p>B – Section 3</p> <p>C- SWMP – Section 5 – Surface water Management GWMP – Section 5 – Groundwater Management</p> <p>D SWMP – Section 6 – Monitoring Requirements GWMP – Section 6 – Monitoring requirements</p> <p>E – Section 4.5</p> <p>F – Section 4.5 and App D (TARPS)</p> <p>G – Incident: Section 5.1 Complaints: Section 5.4 Non-Compliance: Section 7 Exceedance: Section 4.5</p> <p>H – Section 7</p>		



NPO - Northparkes

Water

MPL - Management Plan



Planning &
Environment

Documents: Site – Surface Water Management Plan - Northparkes
Reviewed: 28/07/2023

Post Approval Review

Condition	Sufficient (Yes/No/ Partial)	Document reference and comment	Action Required	Company Response
<u>Annual Review</u> <u>Schedule 6, Condition 4</u> By the end of March each year, or as otherwise agreed by the Secretary, the Proponent shall review the environmental performance of the project to the satisfaction of the Secretary. This review must: (a) describe the development that was carried out in the previous calendar year, and the development that is proposed to be carried out over the next year; (b) include a comprehensive review of the monitoring results and complaints records of the project over the previous calendar year, which includes a comparison of these results against the • the relevant statutory requirements, limits or performance measures/criteria; • the monitoring results of previous years; and • the relevant predictions in the EA; (c) identify any non-compliance over the last year, and describe what actions were (or are being) taken to ensure compliance; (d) identify any trends in the monitoring data over the life of the project; (e) identify any discrepancies between the predicted and actual impacts of the project, and analyse the potential cause of any significant discrepancies; and (f) describe what measures will be implemented over the next year to improve the environmental performance of the project.	Yes	Section 5.6		



NPO - Northparkes

Water

MPL - Management Plan



Post Approval Review



Planning & Environment

Documents: Site – Surface Water Management Plan - Northparkes

Reviewed: 28/07/2023

Condition	Sufficient (Yes/No/Partial)	Document reference and comment	Action Required	Company Response
Revision of Strategies, Plans and Programs Schedule 6, Condition 5 <p>Within 3 months of: (a) the submission of an annual review under condition 4 above; (b) the submission of an incident report under condition 7 below; (c) the submission of an audit under condition 9 below; or (d) any modification to the conditions of this approval (unless the conditions require otherwise),</p> <p>the Proponent shall review and, if necessary, revise the strategies, plans, and programs required under this approval to the satisfaction of the Secretary. Where this review leads to revisions in any such document, then within 4 weeks of the review the revised document must be submitted to the Secretary for approval.</p> <p><i>Note: This is to ensure the strategies, plans and programs are updated on a regular basis, and incorporate any recommended measures to improve the environmental performance of the project.</i></p>	Yes	Condition 7		
Incident Reporting Schedule 6, Condition 7 <p>The Applicant must notify the Department and any other relevant agencies via the Major Projects Portal Immediately after It becomes aware of the Incident. This notice must describe the location and nature of the Incident.</p>	Partial	Section 5.1 details requirement, however, this condition is not included in the Management Plan	Please include this condition to Table 1 – Water Management Plan requirements	Included
Non-Compliance Notification <p>7A. Withing 7 days of becoming aware of a non-compliance with the conditions of this consent, the Applicant must notify the Department of the non-compliance via the Major Projects Portal. This notice must set out the non-compliance, the reasons for the non-compliance (if known) and what actions have been taken, or will be taken, to address the non-compliance.</p>	Partial	Section 5.1 details requirement, however, this condition is not included in the Management Plan	Please include this condition to Table 1 – Water Management Plan requirements	Included



NPO - Northparkes

Water

MPL - Management Plan



Post Approval Review



Planning &
Environment

Documents: Site – Surface Water Management Plan - Northparkes
Reviewed: 28/07/2023

Condition	Sufficient (Yes/No/ Partial)	Document reference and comment	Action Required	Company Response
Regular Reporting Schedule 6, Condition 8 <p>The Proponent shall provide regular reporting on the environmental performance of the project on its website, in accordance with the reporting arrangements in any plans or programs approved under the conditions of this approval.</p>	Partial	Section 5.2 details requirement, however, this condition is not included in the Management Plan	Please include this condition to Table 1 – Water Management Plan requirements	Included
Independent Environmental Audit Schedule 6, Condition 9 <p>9. By the 31 March 2015, and every 3 years thereafter, unless the Secretary directs otherwise, the Proponent shall commission and pay the full cost of an Independent Environmental Audit of the project. This audit must:</p> <ul style="list-style-type: none"> (a) be conducted by a suitably qualified, experienced and independent team of experts whose appointment has been endorsed by the Secretary; (b) include consultation with the relevant agencies; (c) assess the environmental performance of the project and assess whether it is complying with the requirements in this approval, and any other relevant approvals, relevant EPL/s and/or Mining Lease (including any assessment, plan or program required under these approvals); (d) review the adequacy of any approved strategy, plan or program required under the abovementioned approvals; and (e) recommend measures or actions to improve the environmental performance of the project, and/or any strategy, plan or program required under these approvals. <p><i>Note: This audit team must be led by a suitably qualified auditor, and include experts any fields specified by the Secretary.</i></p>	No		<p>Please include a section that details these requirements in the Water Management Plan.</p> <p>Please include this condition to Table 1 – Water Management Plan requirements</p>	Included in Table 1 and Section 5



NPO - Northparkes

Water

MPL - Management Plan



Planning &
Environment

Documents: Site – Surface Water Management Plan - Northparkes
Reviewed: 28/07/2023

Post Approval Review

Condition	Sufficient (Yes/No/ Partial)	Document reference and comment	Action Required	Company Response
Schedule 6, Condition 10 Within 3 months of commissioning this audit, or as otherwise agreed by the Secretary, the Proponent shall submit a copy of the audit report to the Secretary, together with its response to any recommendations contained in the audit report.	No		Please include a section that details these requirements in the Water Management Plan. Please include this condition to Table 1 – Water Management Plan requirements	Included in section 5.7 and Table 1 of the WMP
Access to Information Schedule 6, Condition 11 The Proponent shall: (a) make the following information publicly available on its website: <ul style="list-style-type: none"> • the EA; • current statutory approvals for the project; • approved strategies, plans or programs required under the conditions of this approval; • a comprehensive summary of the monitoring results of the project, which have been reported in accordance with the various plans and programs approved under the conditions of this approval; • a complaints register, which is to be updated on a monthly basis; • minutes of CCC meetings; • the last five annual reviews; • any independent environmental audit, and the Proponent's response to the recommendations in any audit; and • any other matter required by the Secretary; and (b) keep this information up to date, to the satisfaction of the Secretary.	No		Please include a section that details these requirements in the Water Management Plan. Please include this condition to Table 1 – Water Management Plan requirements	Included in Section 5.8 and Table 1 of the WMP



NPO - Northparkes

Water

MPL - Management Plan



Post Approval Review



Planning &
Environment

Documents: Site – Surface Water Management Plan - Northparkes
Reviewed: 28/07/2023

General Comments	Action Required	Company Response
Document Referenced Schedule 3 condition 24 as the Water Management Plan condition, Schedule 3, Cond 24 is Biodiversity – Pine Donkey Orchid. Water Management Plan is Sch 3 Condition 23.	Ensure that correct Consent Conditions are used	References updated
SWMP references Section 6 on the WMP as reporting. Section 6 of the WMP is Responsibilities.	Please make sure all references are correct.	References updated
Other Agency Comments	Action Required	Company Response

Water	NPO-ENV-MPL-0010	Version Control: 13	Date Published: 30/06/2025
Document is UNCONTROLLED when printed			Page 41 of 47



NPO - Northparkes Water

MPL - Management Plan



Appendix B – Surface Water Management Plan [NPO-ENV-MPL-0002](#)

Appendix C – Groundwater Management Plan [NPO-ENV-MPL-0007](#)

Water	NPO-ENV-MPL-0010	Version Control: 13	Date Published: 30/06/2025
Document is UNCONTROLLED when printed			Page 42 of 47



Appendix D - Trigger Action Response Plans

Aspect	Normal	Stage 1	Stage 2
Drought Refer to Water Infrastructure Procedure and Tailings Storage Facility and Operational Water Emergency Management (Flood & Drought) TARP for operational details. PRO-0241	Normal Trigger: Water inventory steady or increasing over last 6 months Response: Continue to maximise water recycling and minimise requirements for external water.	Stage 1 Trigger Water inventory falling over last 6 months. Response: Review opportunities to further reduce water usage and maximum recycling. Alert Environmental Superintendent Alert Site Manager	Stage 2 Trigger Drought declaration issued by the NSW Government. Water inventory falling over last 12 months. Response: Review opportunities to further reduce water usage and maximum recycling. Review production schedule and construction activities. Alert Environmental Superintendent Alert Site Manager
Flood Refer to Water Infrastructure Procedure and Tailings Storage Facility and Operational Water Emergency Management (Flood & Drought) TARP for operational details. PRO-0241	Normal Trigger: No significant rainfall events forecast. Response: Maintain and operate water storages in accordance with Northparkes procedures.	Stage 1 Trigger Significant rainfall event forecast (>50 mm) Response: Inspect water management infrastructure. Alert Environmental Superintendent Alert Site Manager	Stage 2 Trigger Rare rainfall event forecast (>100 mm) Response: Inspect water management infrastructure. Prioritise personnel and resources for site water management Alert Environmental Superintendent Alert Site Manager
Emergency discharges	Normal Trigger: Storages within management levels defined within the Tailings Storage Facility and Operational Water Emergency Management TARP. Response: Continue to undertake the management measures within the Tailings Storage Facility and Operational Water Emergency Management TARP and Water Infrastructure Procedure	Stage 1 Trigger (for consecutive Stage 1 triggers escalate to Stage 2) Emergency discharge from sediment pond. Response: Investigate cause for emergency discharge and whether the appropriate procedures were followed. Undertake dewatering of relevant storages to areas water storage capacity exists. Undertake additional surface water quality monitoring rounds of downstream watercourses. Alert Environmental Superintendent Alert Site Manager	Stage 2 Trigger Retention pond emergency discharge into a watercourse or offsite Response: Investigate cause for emergency discharge and whether the appropriate procedures were followed. Undertake dewatering of relevant storages to areas water storage capacity exists. Undertake additional surface water quality monitoring rounds of downstream watercourses and retention ponds Alert Environmental Superintendent Alert Site Manager Implement PIRMP including notify EPA Notify DPE Water, NRAR and EPA



NPO - Northparkes

Water

MPL - Management Plan



Aspect	Normal	Stage 1	Stage 2
Surface water quality - Watercourses and farm dams	Normal Trigger: Surface water quality within historical average for all parameters. Response: Continue water quality monitoring in accordance with the program.	Stage 1 Trigger (for consecutive Stage 1 triggers escalate to Stage 2) Surface water quality concentrations outside of the Stage 1 Water Quality Trigger Levels for at least one parameter for more than one monitoring round. Response: Investigate the source for the change in surface water quality and whether it is caused from environmental change, mining related or external. Undertake further checking of equipment and resample if required to confirm reported value Alert Environmental Superintendent	Stage 2 Trigger Surface water quality concentrations outside of the Stage 2 Water Quality Trigger Levels for at least one parameter for more than one monitoring round. Response: Investigate the source for the change in surface water quality and whether it is caused from environmental change, mining related or external. Undertake further checking of equipment and resample if required to confirm reported value Alert Environmental Superintendent Alert Site Manager Stage 2 Trigger Investigation indicates deterioration in off-site water quality is due to Northparkes activities. Response: Notify DPE Water, NRAR and EPA. Take reasonable and feasible steps to minimise potential harm to the environment.
Surface water quality - sediment ponds, retention ponds and process water systems	Normal Trigger: Surface water quality within historical average for all parameters. Response: Continue water quality monitoring in accordance with the program.	Stage 1 Trigger (for consecutive Stage 1 triggers escalate to Stage 2) Surface water quality concentrations outside of the Stage 1 Water Quality Trigger Levels for at least one parameter for more than one Monitoring round. Response: Investigate the source for the change in surface water quality and whether it is caused from environmental change, mining related or external. Alert Environment Superintendent. Undertake further checking of equipment and resample if required to confirm reported value Alert Environmental Superintendent	Stage 2 Trigger Surface water quality concentrations outside of the Stage 2 Water Quality Trigger Levels for at least one parameter for more than one monitoring round. Response: If possible isolate the problem area through diverting contributing surface flows to another appropriate storage, while the cause for the water quality exceedances are determined. Investigate the source for the change in surface water quality and whether it is caused from environmental change, mining related or external. Alert Environmental Superintendent Alert Site Manager
Erosion and sediment control	Normal Trigger:	Stage 1 Trigger: (for consecutive Stage 1 triggers escalate to Stage 2)	Stage 2 Trigger Stage 1 trigger leading to erosion or deposition of sediment in a watercourse.

Water

NPO-ENV-MPL-0010

Version Control: 13

Date Published:

30/06/2025

Document is UNCONTROLLED when printed

Page 44 of 47



NPO - Northparkes

Water

MPL - Management Plan



Aspect	Normal	Stage 1	Stage 2
	<p>Site inspections do not identify any unstable disturbance areas, or migration of sediment away from designated development areas.</p> <p>Response:</p> <p>Continue site inspections in accordance with the program in Section 7.</p>	<p>One or more areas have indicated surface erosion in the form of rilling, bank erosion or other movement of sediment from an area of disturbance.</p> <p>Response:</p> <p>Seek to stabilise the area to stop the erosion process. This can include the use of groundcover, or other temporary measures. Investigate works undertaken prior to the disturbance activities.</p> <p>Alert Environmental Superintendent</p>	<p>Response:</p> <p>Seek to stabilise the area to stop the erosion process. This can include the use of groundcover, or other temporary measures.</p> <p>Investigate works undertaken prior to the disturbance activities.</p> <p>If possible isolate the problem area through diverting contributing surface flows to another appropriate storage, while the cause for the water quality exceedances are determined.</p> <p>Alert Environmental Superintendent</p> <p>Alert Site Manager</p> <p>Notify DPE Water, NRAR and EPA</p>
Watercourse instabilities	<p>Normal Triggers:</p> <p>Watercourse monitoring indicates no areas of instabilities from visual inspections.</p> <p>Response:</p> <p>Continue site inspections in accordance with the program.</p>	<p>Stage 1 Trigger:</p> <p>(for consecutive Stage 1 triggers escalate to Stage 2)</p> <p>Watercourse monitoring indicates one or more areas of instabilities in watercourses.</p> <p>Response:</p> <p>Seek to stabilise the instabilities, which may include advice from a geomorphic specialist.</p> <p>Investigate cause for instabilities, and whether recent construction works have created the instability.</p> <p>Alert Environmental Superintendent</p>	<p>Stage 2 Trigger:</p> <p>Watercourse monitoring indicates one or more areas of instabilities in watercourses causing sediment loads to migrate and or impact to riparian vegetation.</p> <p>Response:</p> <p>Seek to stabilise the instabilities, which may include advice from a geomorphic specialist. Investigate cause for instabilities, and whether recent construction works have created the instability.</p> <p>Alert Environmental Superintendent</p> <p>Alert Site Manager</p> <p>Notify DPE Water, NRAR and EPA</p>



NPO - Northparkes

Water

MPL - Management Plan



Monitoring Parameter	Normal	Stage 1	Stage 2
Groundwater Quality	<p>Normal Trigger: Groundwater quality is within trigger levels</p> <p>Response: Continue to monitor on a quarterly basis.</p>	<p>Stage 1 Trigger: (for consecutive Stage 1 triggers escalate to Stage 2) Groundwater quality is outside the exceed Stage 1 Water Quality Trigger Levels for at least one parameter.</p> <p>Response: Investigate if change in groundwater level is due to Northparkes activities. Consider site activities, historical baseline and results from nearby locations. Take further sample to verify results. Alert Environmental Superintendent</p> <p>Stage 1 Trigger: Complaint from adjacent bore owner regarding groundwater quantity or quality.</p> <p>Response: Alert Environmental Superintendent. Sample affected bore if possible. Sample surrounding bores if possible. Investigate degradation of groundwater quality.</p>	<p>Stage 2 Trigger: Groundwater quality is outside Stage 1 Water Quality Trigger Levels for at least one parameter for more than 4 monitoring rounds or exceeds Stage 2 trigger levels.</p> <p>Response: Investigate if change in groundwater quality is due to mining related activity. Consider site activities, historical baseline and results from nearby locations. Take further sample to verify results. Alert Environmental Superintendent Alert Site Manager</p> <p>Stage 2 Trigger: Investigation identifies that exceedance is the result of Northparkes activities.</p> <p>Response: Notify DPE Water, NRAR and EPA. Take reasonable and feasible steps to minimise potential harm to the environment.</p>



NPO - Northparkes

Water

MPL - Management Plan



Monitoring Parameter	Normal	Stage 1	Stage 2
Groundwater Level	<p>Normal Trigger: Groundwater level is within typical range of historical and climatic average.</p> <p>Response: Continue to monitor on a quarterly basis.</p>	<p>Stage 1 Trigger: Depth to groundwater of non-regional bore exceeds Stage 1 Groundwater Level Trigger Values. (for consecutive Stage 1 triggers escalate to Stage 2)</p> <p>Response: Investigate if change in groundwater level is due to mining related activity. Consider site activities, historical baseline and results from nearby locations. Take further sample to verify readings Alert Environmental Superintendent</p> <p>Stage 1 Trigger: Complaint from adjacent bore owner regarding groundwater level.</p> <p>Response: Compare groundwater level to Groundwater trigger levels. Investigate if change in groundwater level is due to mining related activity. Consider site activities, historical baseline and results from nearby locations. Take further sample to verify readings Alert Environmental Superintendent</p>	<p>Stage 2 Trigger: Depth to groundwater of regional bore exceeds Stage 1 Groundwater Level Trigger Values.</p> <p>Response: Investigate if change in groundwater level is due to mining related activity. Consider site activities, historical baseline and results from nearby locations. Take further sample to verify readings Alert Environmental Superintendent Alert Site Manager</p> <p>Stage 2 Trigger: Investigation identifies that exceedance is the result of Northparkes activities.</p> <p>Response: Notify DPE Water, NRAR and EPA. Take reasonable and feasible steps to minimise potential harm to the environment.</p>